

EXECUTIVE SUMMARY

JOINT LAND USE STUDY





What Is a Joint Land Use Study?

A Joint Land Use Study (JLUS) is a cooperative planning effort conducted as a joint venture between an active military installation, surrounding jurisdictions, state and federal agencies, and other affected stakeholders to address compatibility around military installations.

The Naval Air Station Meridian (NAS Meridian) JLUS is funded by a grant from the Department of Defense Office of Economic Adjustment (OEA) and contributions by the JLUS sponsor, Lauderdale County.



Why Is It Important to Partner with NAS Meridian?

NAS Meridian is home to the Naval Technical Training Center (NTTC), which is under the command of the Commander of the Naval Education and Training Command. NTTC Meridian is the Navy's primary training facility for enlisted Administrative and Supply for Class "A" schools. The Supply Class "A" schools provide the courses that train enlisted sailors for the positions they will serve in the U.S. Navy. Approximately 2,600 Navy personnel graduate from the center's schools annually.

NAS Meridian provides a \$430 million contribution (including direct payroll and the purchase of goods and services) and 2,689 direct jobs with a total of 5,526 jobs generated into the local economy.

Collaborative Planning

The JLUS planning process was designed to create a locally relevant study that builds consensus and obtains support from the stakeholders involved. The public was involved in the development of this JLUS by providing their ideas and feedback, both in the JLUS public workshops and through the use of the interactive project website:

www.meridianjlus.com

The development of the project was also guided by two committees composed of JLUS Partner representatives. The two committees were:

- The Policy Committee, which provided project oversight, guidance, and decision-making, and
- The Technical Working Group, which assisted in issue identification and the compatibility assessment, development of recommendations, and overall report development.

The NAS Meridian JLUS collaborative planning effort included the following project partners:

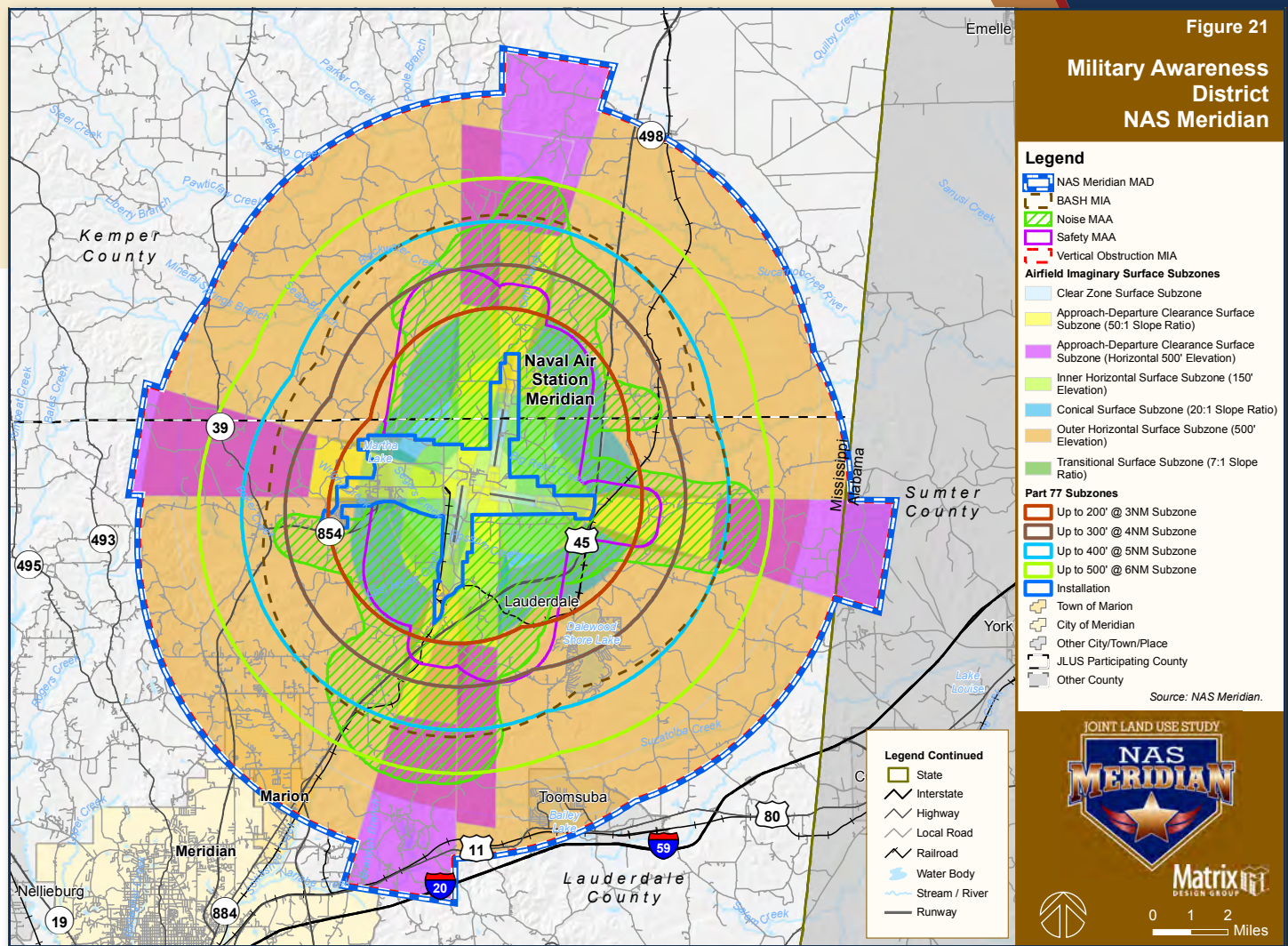
- Lauderdale County
- Kemper County
- City of Meridian
- NAS Meridian
- Town of Marion



JLUS Recommended Strategies

The heart of the NAS Meridian JLUS is a set of 86 recommended strategies that address compatibility issues for the JLUS Study Area. Since the JLUS is the result of a collaborative planning process, the strategies represent a consensus plan — a realistic and coordinated approach to compatibility planning developed with the support of stakeholders involved throughout the process. The strategies developed are uniquely tailored for this JLUS and respect the local context, including the value of personal property rights recognized throughout the region.

A key strategy to guide compatible development without overregulating is establishment of an awareness district, titled Military Awareness District, proposed for both NAS Meridian and Navy Outlying Field (NOLF) Joe Williams. See the following pages for maps that illustrate the geographic boundaries of the Military Awareness Districts (MAD) and their Military Awareness Areas (MAA).



Military Awareness Areas

A key strategy to guide compatible development and activities, without overregulation, is the establishment of a series of Military Awareness Areas (MAAs) and a Military Awareness District (MAD) for each of the facilities in the JLUS Study Area. The MAAs are used to define the geographic areas where specific JLUS strategies are to be applied.

This technique ensures the strategies are applied to the appropriate areas, and that locations deemed not subject to a specific compatibility issue are not adversely impacted by actions inappropriate for their location or circumstance.

For the purpose of this JLUS, there are two MADs, one for NAS Meridian and one for the NOLF Joe Williams.

The MAAs were designated to accomplish the following:

- Promote and protect public health, safety, and welfare,
- Maintain the operational capabilities of military installations,
- Promote an awareness of the size and scope of military operating areas, and
- Establish compatibility requirements within the designated area, such as requirements for notification of development to the military.

NAS Meridian Military Awareness District

The NAS Meridian Military Awareness District (MAD) covers all the land located within all the NAS Meridian MAAs and the area defined by Federal Aviation Administration (FAA) vertical obstruction guidance. All the strategies would apply to some portion of this MAD. This is an awareness tool to be used in communication and coordination with potential property developers and home builders.





JLUS Recommended Strategies for the NAS Meridian JLUS Study Area with a Focus on the Main Station at NAS Meridian

The following list highlights key recommended strategies for the NAS Meridian Main Station JLUS Study Area that were developed and agreed upon by the JLUS partners.



Communication / Coordination

- Establish a JLUS Implementation Committee.
- IN PROGRESS** ■ Develop and approve Memorandum of Understanding (MOU) for collaboration and review of proposed development.
- COMPLETED** ■ Invite a NAS Meridian representative to serve as a Non-Voting member of the Jurisdiction Planning Commission and other planning bodies.
- Provide Copies of Pre-Development Applications / Proposals / Permit Applications to NAS Meridian as One of the Agencies that Reviews these Planning Documents.
- Utilize community fairs and Career Days at local schools to educate the public about the NAS Meridian Mission.
- Consider developing a Development Review Process for the Town of Marion.



Frequency Spectrum Interference / Impedance

- Formalize coordination procedures for the siting of structures that could generate frequency Interference.
- Apply and enforce Lauderdale County Air Installation Compatible Use Zone (AICUZ) Ordinance.
- Amend and enforce Kemper County AICUZ Ordinance.



Infrastructure Extensions

- Improve infrastructure planning coordination.
- Update road plans to include project specifications and military compatibility guidance.



Competition for Land, Air, and Sea Space

- Develop and adopt unauthorized drone No-Fly Zone.



Land Use

- Incorporate Military Awareness Areas (MAAs) and Military Awareness District (MAD) information in available mapping and communication efforts in Lauderdale and Kemper Counties.
- Maintain and update MAAs and MADs.
- Adopt and enforce amended AICUZ Ordinances.



Legislative Initiatives

- Develop and adopt Military Notification legislation.



Noise



- Continue to obtain signatures and certifications for Disclosures of Noise prior to issuing of building permits.



Roadway Capacity

- Develop a plan to provide public transit on weekends to serve the military trainees.
- Modify Meridian Public Transit System schedule.



Safety Zones

- Use the Safety MAAs for NAS Meridian and NOLF Joe Williams in Communication, Coordination, and Planning efforts.



- Continue to obtain signatures and certifications prior to issuing of building permits.

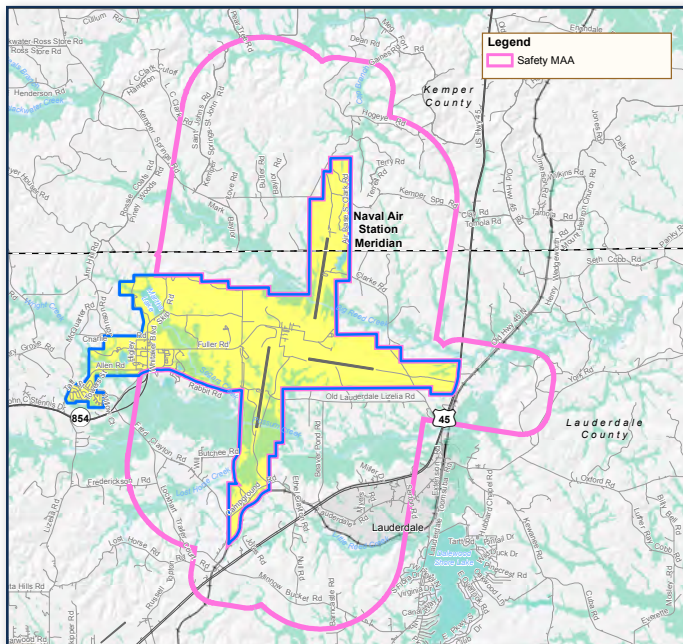
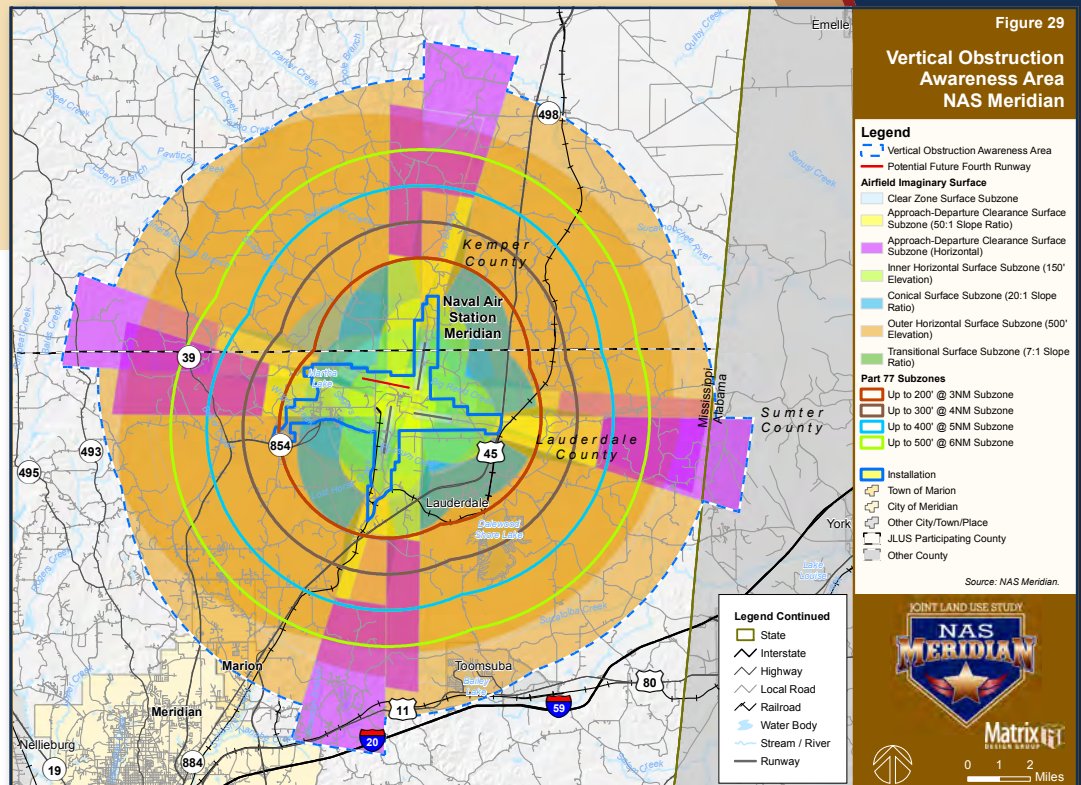


Vertical Obstructions

- Formalize existing coordination through a Memorandum of Agreement (MOA).
- Develop an official form for cell tower permits.
- Amend Zoning Ordinances for Imaginary Surfaces heights and slopes.

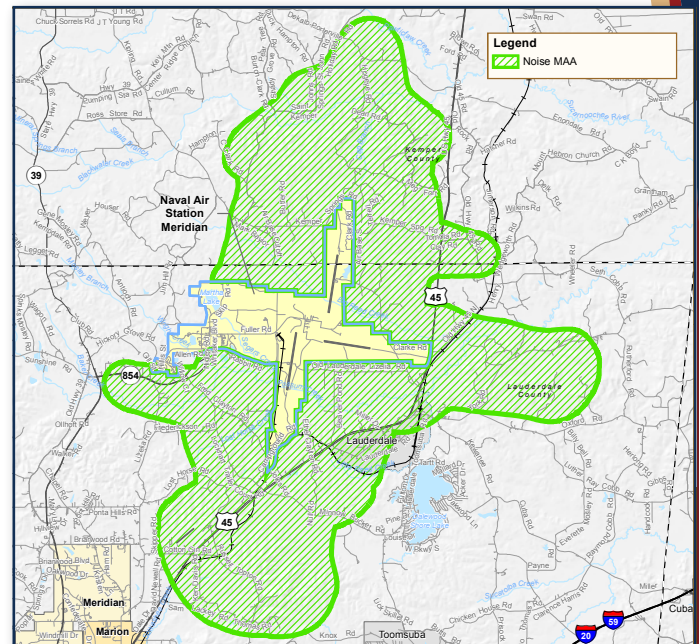
NAS Meridian Vertical Obstruction AA

The Vertical Obstruction Awareness Area (VOAA) is included in this report to provide awareness about the impact related to imaginary surfaces for the design consideration of a fourth runway. This map provides the total area covered by the imaginary surfaces if the fourth runway is funded.



NAS Meridian Safety MAA

This MAA includes the land located within NAS Meridian's Aircraft Safety Zones and a 1/2-mile buffer area outside the safety zones.



NAS Meridian Noise MAA

This MAA is an area defined by the 60dB DNL noise contour and a 1/2-mile buffer associated with air operations at NAS Meridian.



JLUS Recommended Strategies for NOLF Joe Williams in Support of the NAS Meridian Mission

The following list highlights key recommended strategies for NOLF Joe Williams that were developed and agreed upon by the JLUS partners.



Anti-Terrorism / Force Protection

- Develop a MOA to facilitate regular security of NOLF Joe Williams.
- Consider opportunities for securing NOLF Joe Williams.



Communication / Coordination

- Develop and approve MOU for collaboration and review of proposed developments.
- Invite a NAS Meridian representative to serve as a Non-Voting member of the Jurisdiction Planning Commission and other planning bodies.
- Provide Copies of Pre-Development Applications / Proposals / Permit Applications to NAS Meridian as One of the Agencies that Reviews these Planning Documents.
- Develop a MOA between NAS Meridian and Kemper County.



Frequency Spectrum Interference / Impedance

- Formalize coordination procedures for the siting of structures that could generate frequency interference.
- Amend and enforce Kemper County AICUZ Ordinance.



Infrastructure Extensions

- Improve infrastructure planning coordination.
- Update road plans to include project specifications and military compatibility guidance.



Competition for Land, Air, and Sea Space

- Develop and adopt unauthorized drone No-Fly Zone.



Land Use

- Incorporate MAAs and MAD information in available mapping and communication efforts in Lauderdale and Kemper Counties.
- Maintain and update MAAs and MADs.
- Adopt and enforce amended AICUZ Ordinances.



Legislative Initiatives

- Develop and adopt Military Notification legislation.



Noise

- Consider obtaining signatures prior to issuing 911-Emergency addresses and electric power approvals.



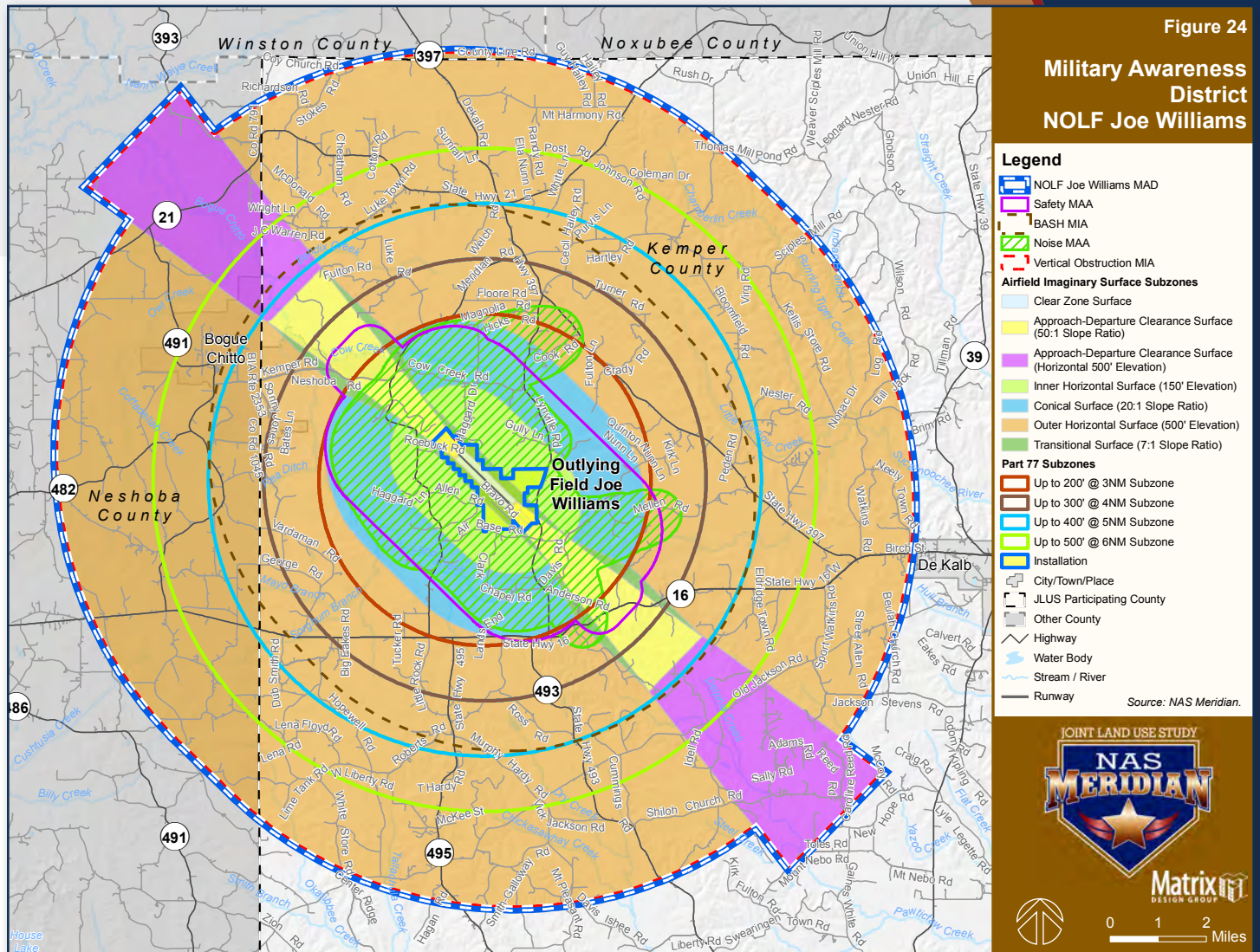
Safety Zones

- Consider obtaining signatures prior to issuing 911-Emergency addresses and electric power approvals.



Vertical Obstructions

- Formalize existing coordination through a MOA.
- Develop an official form for cell tower permits.
- Amend Zoning Ordinances for Imaginary Surfaces heights and slopes.

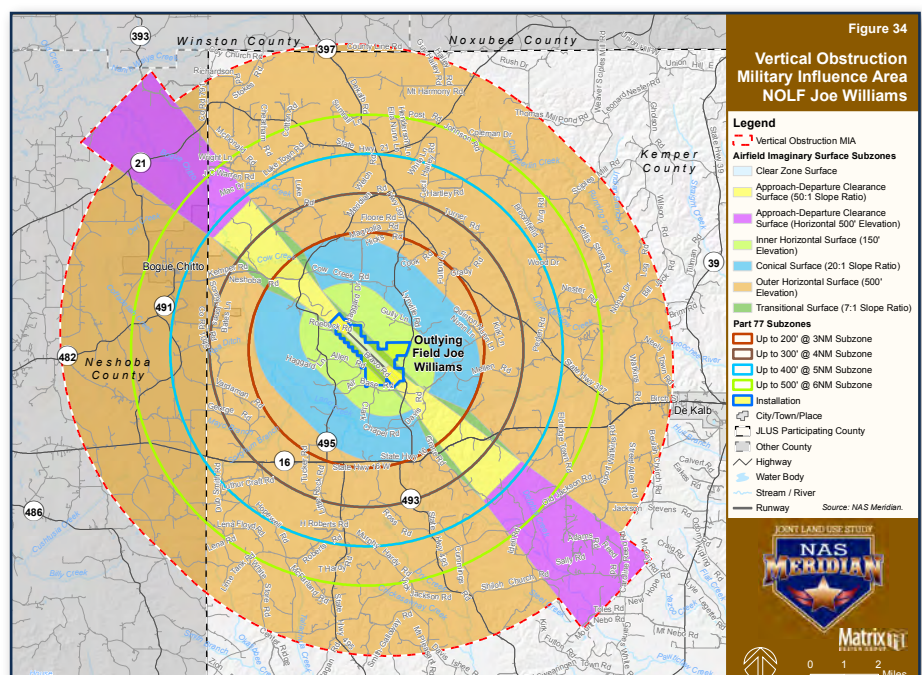


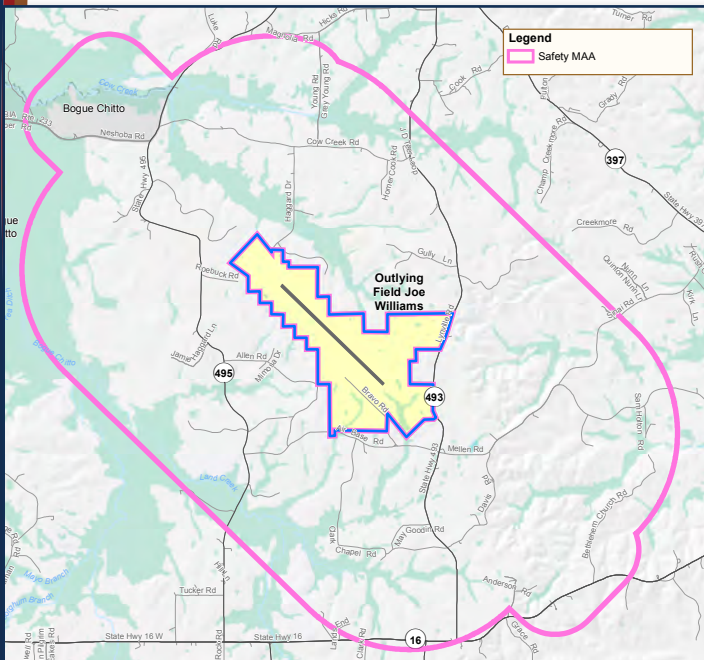
NOLF Joe Williams Military Awareness District (MAD)

The Navy Outlying Field (NOLF) Joe Williams MAD covers all the land located within all the MAAs and the FAA vertical obstruction guidance. Some of the strategies apply to portions of this MAD. This is an awareness tool to be used in communication and coordination with potential developers and home builders.

NOLF Joe Williams Vertical Obstruction Military Influence Area (MIA)

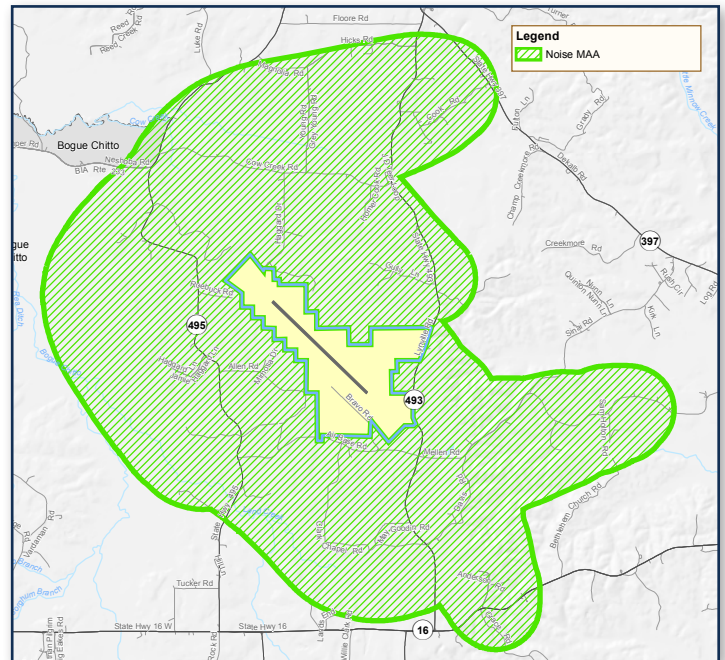
The NOLF Joe Williams Vertical Obstruction MIA serves to protect important flight areas for aircraft that operate out of NOLF Joe Williams. This area covers the total area impacted by the imaginary surfaces of the airfield.





NOLF Joe Williams Safety MAA

This MAA includes the land located within NAS Meridian's Aircraft Safety Zones and a 1/2-mile buffer area outside the safety zones.



NOLF Joe Williams Noise MAA

This MAA is an area defined by the 60dB DNL noise contour and a 1/2-mile buffer associated with air operations at NAS Meridian.



JLUS Documents Available to the Public

JLUS Report: Presents an overview of the JLUS planning process, purpose and objectives of the study, and the Recommended Options Portfolio.

JLUS Background Report: Provides the technical background and detailed assessment of the compatibility issues identified as part of the JLUS.

JLUS Executive Summary: Serves as a quick reference describing the purpose of a JLUS and providing an overview of the key Military Compatibility Areas.

For Additional Information Contact:

Lauderdale County
410 Constitution Avenue, 11th Floor
Meridian, MS 39301
P. (601) 482-9751

This study was prepared under contract with Lauderdale County with financial support from the Office of Economic Adjustment, Department of Defense. The content reflects the views of Lauderdale County and does not necessarily reflect the views of the Office of Economic Adjustment.



Rev. 2017 08 30