

February 1, 2023

**ADDENDUM NO. 1**

HVAC UPGRADES – LAUDERDALE COUNTY, MS  
 MERIDIAN, MS  
 ERG P.N. 21.006



- I. Bidder acknowledges that it is Bidder’s responsibility to ascertain whether any Addenda have been issued and if so, to obtain copies of such Addenda. Bidder therefore agrees to be bound by all Addenda that have been issued for this Bid.

This Addendum forms a part of the Contract Documents and modifies the original Bidding Documents and consists of 3 pages (plus attachments). The following clarifications, changes, additions, or deletions shall be made to the following documents as indicated, and all other conditions shall remain the same.

II. PERTAINING TO THE SPECIFICATIONS

Item 1.	Reference:	004113 – BID PROPOSAL FORM
	Scope:	<p>Replace the Bid Proposal Form with the attached Bid Proposal Form.</p> <p>Added Lines for Additive Alternate No. 1 and Additive Alternate No. 2.</p> <p><u>Clarification:</u></p> <p>Base Bid Scope: All work associated with the Human Services Building.</p> <p>Additive Alternate No. 1 Scope: All work associated with the Emergency Services / EMA Building.</p> <p>Additive Alternate No. 2 Scope: All work associated with the Agri-Center.</p>

III. PERTAINING TO THE DRAWINGS

Item 2.	Reference:	Sheet T0.1
	Scope:	<p>Revise Project Summary to the following:</p> <p><u>HUMAN SERVICES</u></p> <p>BASE BID</p> <ul style="list-style-type: none"> <li>• DEMOLITION OF CEILING</li> <li>• DEMOLITION OF HVAC AND CONTROL SYSTEM</li> <li>• INSTALLATION OF NEW HVAC AND CONTROL SYSTEMS</li> <li>• INSTALLATION OF NEW CEILING, PATCHING AND PAINTING</li> <li>• ELECTRICAL SYSTEMS DEMOLITION AND SERVICE TO NEW EQUIPMENT</li> </ul> <p><u>EMERGENCY SERVICES / EMA</u></p> <p>ADD ALTERNATE #1</p> <ul style="list-style-type: none"> <li>• DEMOLITION OF CEILINGS WHERE SHOWN</li> <li>• DEMOLITION OF VAV UNITS AND CONTROL SYSTEM INCLUDING PNEUMATIC CONTROLS NO LONGER IN SERVICE.</li> <li>• INSTALLATION OF NEW VAV UNITS AND CONTROL SYSTEM</li> <li>• INSTALLATION OF NEW CEILING WHERE SHOWN, PATCHING AND PAINTING</li> <li>• ELECTRICAL SYSTEMS DEMOLITION AND SERVICE TO NEW EQUIPMENT</li> </ul> <p><u>AGRI-CENTER</u></p> <p>ADD ALTERNATE #2</p> <ul style="list-style-type: none"> <li>• DEMOLITION OF LOWER RESTROOM CEILINGS</li> <li>• INSTALLATION OF NEW HVAC SYSTEM</li> <li>• INSTALLATION OF LOWER RESTROOM NEW CEILINGS, PATCHING AND PAINTING</li> <li>• ELECTRICAL SYSTEMS DEMOLITION AND SERVICE TO NEW</li> </ul>

EQUIPMENT		
Item 3	Reference:	Electrical Drawings
	Scope:	<p>Add the following attached Electrical Drawings.</p> <ul style="list-style-type: none"> <li>• E0.1 Electrical Symbols Legend</li> <li>• E0.2 Electrical Schedules &amp; Details</li> <li>• E1.1 Human Services Bldg. Electrical 1<sup>st</sup> Floor Plan</li> <li>• E1.2 Human Services Bldg. Electrical 2<sup>nd</sup> Floor Plan</li> <li>• E1.3 Human Services Bldg. Electrical Schedules &amp; Details</li> <li>• E2.1 Emergency Services Bldg. Electrical 1<sup>st</sup> Floor Plan</li> <li>• E2.2 Emergency Services Bldg. Electrical 2<sup>nd</sup> Floor Plan</li> <li>• E3.1 Agri-Center Bldg. Electrical Upper Level Plan</li> <li>• E3.2 Agri-Center Bldg. Electrical Lower Level Plan</li> </ul>

IV. PRE-BID CONFERENCE

Item 4.	Reference:	Pre-Bid Conference
	Scope:	A pre-bid conference was held on Thursday 01/19/2023 at 10:00 am. Minutes from the meeting are included as an attachment to the addendum.

**END OF ADDENDUM NO. 1**

---

---

---

---

---

---

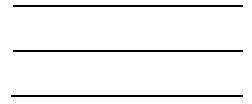
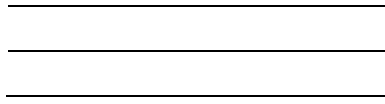
---

---

---



\_\_\_\_\_



L.V. ELECTRICAL EQUIPMENT SYMBOLS LEGEND	
	BRANCH CIRCUIT PANELBOARD, SURFACE MOUNT, 208Y/120 VOLT SYSTEM.
	BRANCH CIRCUIT PANELBOARD, DOUBLE SECTION, SURFACE MOUNT, 208Y/120 VOLT SYSTEM.
	BRANCH CIRCUIT PANELBOARD, SURFACE MOUNT, 480Y/277 VOLT SYSTEM.
	BRANCH CIRCUIT PANELBOARD, DOUBLE SECTION, SURFACE MOUNT, 480Y/277 VOLT SYSTEM.
	POWER OR SMALL DISTRIBUTION PANELBOARD, SURFACE MOUNT, 208Y/120 VOLT SYSTEM.
	POWER OR SMALL DISTRIBUTION PANELBOARD, SURFACE MOUNT, 480Y/277 VOLT SYSTEM.
	DISTRIBUTION PANELBOARD, SURFACE MOUNT, 208Y/120 VOLT SYSTEM.
	DISTRIBUTION PANELBOARD, SURFACE MOUNT, 480Y/277 VOLT SYSTEM.
	SWITCHBOARD, FREE STANDING WITH HOUSE KEEPING PAD, SERVICE ENTRANCE RATED, ELECTRICAL CHARACTERISTICS AS INDICATED OR SCHEDULED.
	TRANSFORMER, DRY-TYPE, KVA & VOLTAGE RATINGS AS INDICATED, FLOOR MOUNTED ON NEOPRENE PADS UNLESS INDICATED OTHERWISE.
	ENCLOSED CIRCUIT BREAKER, NEMA RATED ENCLOSURE AS INDICATED OR REQUIRED FOR INSTALLED ENVIRONMENT, ELECTRICAL CHARACTERISTICS AS INDICATED, SURFACE MOUNT C.L. UP TO 54" A.F.F. UNLESS INDICATED OTHERWISE.
	SWITCH, UNFUSED SAFETY DISCONNECT, AMPERE RATING, NUMBER OF POLES, PROPER VOLTAGE RATING FOR BRANCH CIRCUIT, SURFACE MOUNT C.L. UP TO 54" A.F.F. UNLESS INDICATED OTHERWISE.
	SWITCH, UNFUSED SAFETY DISCONNECT, NEMA 3R RATED, AMPERE RATING, NUMBER OF POLES, PROPER VOLTAGE RATING FOR BRANCH CIRCUIT, MOUNT C.L. UP TO 54" A.F.F. UNLESS INDICATED OTHERWISE.
	SWITCH, FUSED SAFETY DISCONNECT, AMPERE RATING, NUMBER OF POLES, PROPER VOLTAGE RATING FOR BRANCH CIRCUIT, SURFACE MOUNT C.L. UP TO 54" A.F.F. UNLESS INDICATED OTHERWISE.
	SWITCH, FUSED SAFETY DISCONNECT, NEMA 3R RATED, AMPERE RATING, NUMBER OF POLES, PROPER VOLTAGE RATING FOR BRANCH CIRCUIT, MOUNT C.L. UP TO 54" A.F.F. UNLESS INDICATED OTHERWISE.
	DISCONNECT SWITCH, TOGGLE SWITCH TYPE WITH OUTLET BOX & PLATE, 20A1P, 120/277V, FLUSH MOUNT C.L. UP TO 48" A.F.F. UNLESS INDICATED OTHERWISE.
	DISCONNECT SWITCH, TOGGLE SWITCH TYPE WITH OUTLET BOX & PLATE, 20A2P, 120/277V, FLUSH MOUNT C.L. UP TO 48" A.F.F. UNLESS INDICATED OTHERWISE.

EMERGENCY POWER SYSTEM SYMBOLS LEGEND	
	DIESEL ENGINE GENERATOR WITH SUB-BASE FUEL TANK, WEATHER HOUSING & CONCRETE PAD, KW/KVA & VOLTAGE RATINGS AS INDICATED, VERIFY LOCATION, ORIENTATION, ETC. WITH PROFESSIONAL PRIOR TO ROUGH-IN.
	GASEOUS ENGINE GENERATOR WITH WEATHER HOUSING & CONCRETE PAD, KW/KVA & VOLTAGE RATINGS AS INDICATED, VERIFY LOCATION, ORIENTATION, ETC. WITH PROFESSIONAL PRIOR TO ROUGH-IN.
	AUTOMATIC TRANSFER SWITCH, NEMA 1 ENCLOSURE, AMPERE RATING & NUMBER OF POLES AS INDICATED, SURFACE MOUNT, "LS" INDICATES LIFE SAFETY BRANCH, "CR" INDICATES CRITICAL BRANCH, "EQ" INDICATES EQUIPMENT BRANCH.
	MANUAL TRANSFER SWITCH, NEMA 1/3R ENCLOSURE AS INDICATED, AMPERE RATING & NUMBER OF POLES AS INDICATED, SURFACE MOUNT.
	3-WAY MANUAL TRANSFER SWITCH/DOCKING STATION, NEMA 3R ENCLOSURE AS INDICATED, AMPERE RATING & NUMBER OF POLES AS INDICATED, SURFACE MOUNT.
	ENGINE GENERATOR REMOTE ALARM PANEL, FLUSH MOUNT C.L. UP TO 54" A.F.F. OR AS DIRECTED, VERIFY LOCATION PRIOR TO ROUGH-IN.
	ENGINE GENERATOR REMOTE ALARM PANEL, SURFACE MOUNT C.L. UP TO 54" A.F.F. OR AS DIRECTED, VERIFY LOCATION PRIOR TO ROUGH-IN.
	ENGINE GENERATOR REMOTE EMERGENCY POWER OFF PUSHBUTTON STATION, SEMI-FLUSH MOUNT C.L. UP TO 48" A.F.F. OR AS DIRECTED.

ELECTRICAL ABBREVIATIONS	
A.A.C.	ADJACENT TO ANY SYMBOL DENOTES DEVICE/OUTLET INSTALLED ABOVE ACCESSIBLE CEILING.
A.F.F.	DENOTES "ABOVE THE FINISHED FLOOR".
A.F.G.	DENOTES "ABOVE THE FINISHED GRADE".
B.F.G.	DENOTES "BELOW THE FINISHED GRADE".
GFI	ADJACENT TO ANY DEVICE OUTLET SYMBOL DENOTES DEVICE IS GROUND-FAULT INTERRUPTER TYPE.
WP	ADJACENT TO ANY OUTLET SYMBOL DENOTES DEVICE/OUTLET & INSTALLATION IS WEATHER PROOF.
CLG	ADJACENT TO ANY OUTLET SYMBOL, DENOTES DEVICE/OUTLET IS FLUSH IN CEILING, VERIFY LOCATION WITH PROFESSIONAL PRIOR TO ROUGH-IN.
SOF	ADJACENT TO ANY OUTLET SYMBOL DENOTES DEVICE/OUTLET IS MOUNTED FLUSH IN SOFFIT, VERIFY LOCATION WITH PROFESSIONAL PRIOR TO ROUGH-IN.
SURF	ADJACENT TO ANY OUTLET SYMBOL DENOTES DEVICE/OUTLET IS SURFACE MOUNTED USING SURFACE METAL RACEWAYS & BOXES, VERIFY ROUTING WITH ARCHITECT PRIOR TO ROUGH-IN.
ROOF	ADJACENT TO ANY OUTLET SYMBOL DENOTES DEVICE/OUTLET/CONNECTION IS ON THE ROOF, VERIFY LOCATION WITH PROFESSIONAL PRIOR TO ROUGH-IN.
EXG	ADJACENT TO ANY SYMBOL DENOTES OUTLET/DEVICE/EQUIPMENT IS EXISTING, LOCATION SHOWN IS APPROXIMATE & REPRESENTATIVE, SITE VERIFY EXISTING CONDITIONS.
REL	ADJACENT TO ANY SYMBOL DENOTES EXISTING OUTLET/DEVICE/EQUIPMENT TO BE RELOCATED AS INDICATED, LOCATION SHOWN IS APPROXIMATE & REPRESENTATIVE, SITE VERIFY EXISTING CONDITIONS.

POWER RACEWAYS & BOXES SYMBOLS LEGEND	
	BRANCH CIRCUIT (CONDUIT & WIRING) CONCEALED ABOVE CEILING OR IN WALL, NUMBER OF CONDUCTORS, (V) INDICATES EQUIP. GROUNDING CONDUCTOR SIZED PER BRANCH CIRCUIT UNLESS INDICATED OTHERWISE.
	BRANCH CIRCUIT (CONDUIT & WIRING) CONCEALED IN/UNDER FLOOR SLAB PER THE SPECS. OR BELOW THE FINISHED GRADE PER THE SPECS., NUMBER OF CONDUCTORS WITH EQUIPMENT GROUNDING CONDUCTOR (V).
	BRANCH CIRCUIT (CONDUIT & WIRING) EXPOSED ON CEILING ONLY UNLESS INDICATED OTHERWISE, NUMBER OF CONDUCTORS WITH EQUIPMENT GROUNDING CONDUCTOR (V).
	BRANCH CIRCUIT (CONDUIT & WIRING), FLEXIBLE METALLIC CONDUIT (FMC) UNLESS INDICATED OTHERWISE, NUMBER OF CONDUCTORS WITH EQUIPMENT GROUNDING CONDUCTOR (V).
	BRANCH CIRCUIT (CONDUIT & WIRING), LIQUID-TIGHT FLEXIBLE METALLIC CONDUIT (LFMC), NUMBER OF CONDUCTORS WITH EQUIPMENT GROUNDING CONDUCTOR (V).
	BRANCH CIRCUIT(S) (CONDUIT & WIRING) HOMERUN, PANEL & CIRCUIT DESIGNATION(S), ROUTE CONCEALED, NUMBER OF CONDUCTORS, (V) INDICATES EQUIPMENT GROUNDING CONDUCTOR, MINIMUM 3/4" CONDUIT, ALL HOMERUNS GREATER THAN 75 FT. IN LENGTH SHALL USE MINIMUM #10 AWG CONDUCTORS.
	BRANCH CIRCUIT(S) (CONDUIT & WIRING) HOMERUN, PANEL & CIRCUIT DESIGNATION(S), ROUTE EXPOSED, NUMBER OF CONDUCTORS, (V) INDICATES EQUIPMENT GROUNDING CONDUCTOR, MINIMUM 3/4" CONDUIT, ALL HOMERUNS GREATER THAN 75 FT. IN LENGTH SHALL USE MINIMUM #10 AWG CONDUCTORS.
	BRANCH CIRCUIT(S) (CONDUIT & WIRING) HOMERUN, PANEL & CIRCUIT DESIGNATION(S), ROUTE CONCEALED IN/UNDER FLOOR SLAB OR BELOW FINISHED GRADE PER THE SPECS., NUMBER OF CONDUCTORS, (V) INDICATES EQUIPMENT GROUNDING CONDUCTOR, MINIMUM 3/4" CONDUIT, ALL HOMERUNS GREATER THAN 75 FT. IN LENGTH SHALL USE MINIMUM #10 AWG CONDUCTORS.
	SURFACE JUNCTION BOX WITH COVER, SIZE & MOUNTING HEIGHT AS INDICATED, MINIMUM BOX SIZE SHALL BE 4" SQUARE.
	FLUSH JUNCTION BOX WITH PLATE, SIZE & MOUNTING HEIGHT AS INDICATED, MINIMUM BOX SIZE SHALL BE 4" SQUARE WITH 1 GANG RAISED COVER.
	BRANCH CIRCUIT HOMERUN JUNCTION BOX, 4" SQUARE MINIMUM, MOUNT ABOVE ACCESSIBLE CEILING WHERE PRESENT, AT OVERHEAD STRUCTURE OR AS INDICATED.
	BRANCH CIRCUIT HOMERUN JUNCTION BOX, EMERGENCY POWER SYSTEM, 4" SQUARE MINIMUM, MOUNT ABOVE ACCESSIBLE CEILING WHERE PRESENT, AT OVERHEAD STRUCTURE OR AS INDICATED.

WIRING DEVICES SYMBOLS LEGEND	
	GROUNDING RECEPTACLE WITH BOX, PLATE & BRANCH CIRCUIT, 120 VOLTS, NEMA 5-20R, MOUNT C.L. UP TO 18" A.F.F. UNLESS OTHERWISE INDICATED, CIRCUIT DESIGNATION.
	DUPLEX GROUNDING RECEPTACLE WITH BOX, PLATE & BRANCH CIRCUIT, 120 VOLTS, NEMA 5-20R, MOUNT C.L. UP TO 18" A.F.F. UNLESS OTHERWISE INDICATED, CIRCUIT DESIGNATION.
	DUPLEX GROUNDING RECEPTACLE WITH BOX, PLATE & BRANCH CIRCUIT, 120 VOLTS, NEMA 5-20R, MOUNT C.L. UP TO 4" ABOVE COUNTER/BACKSPLASH UNLESS OTHERWISE INDICATED, CIRCUIT DESIGNATIONS.
	DOUBLE DUPLEX GROUNDING RECEPTACLES WITH BOX, PLATE & BRANCH CIRCUIT, 120 VOLTS, NEMA 5-20R, MOUNT C.L. UP TO 18" A.F.F. UNLESS OTHERWISE INDICATED, CIRCUIT DESIGNATION.
	DUPLEX GROUNDING RECEPTACLE WITH BOX, PLATE & BRANCH CIRCUIT, G.F.I. TYPE, 120 VOLTS, NEMA 5-20R, MOUNT C.L. UP TO 18" A.F.F. UNLESS OTHERWISE INDICATED, CIRCUIT DESIGNATION.
	DUPLEX GROUNDING RECEPTACLE WITH BOX, PLATE & BRANCH CIRCUIT, G.F.I. TYPE, 120 VOLTS, NEMA 5-20R, MOUNT C.L. UP TO 4" ABOVE COUNTER/BACKSPLASH WHERE PRESENT OR C.L. UP TO 48" A.F.F. UNLESS OTHERWISE INDICATED, CIRCUIT DESIGNATION.
	DUPLEX GROUNDING RECEPTACLE WITH BOX, WEATHERPROOF COVER & BRANCH CIRCUIT, G.F.I. TYPE, 120 VOLTS, NEMA 5-20R, MOUNT C.L. UP TO 18" A.F.F. UNLESS NOTED OTHERWISE, CIRCUIT DESIGNATION.
	DUPLEX GROUNDING RECEPTACLE WITH BOX, PLATE & EMERGENCY-POWER BRANCH CIRCUIT, RED DEVICE, 120 VOLTS, NEMA 5-20R, MOUNT C.L. UP TO 18" A.F.F. UNLESS OTHERWISE INDICATED, CIRCUIT DESIGNATION.
	DOUBLE DUPLEX GROUNDING RECEPTACLE WITH BOX, PLATE & EMERGENCY-POWER BRANCH CIRCUIT, RED DEVICE, 120 VOLTS, NEMA 5-20R, MOUNT C.L. UP TO 18" A.F.F. UNLESS OTHERWISE INDICATED, CIRCUIT DESIGNATION.
	GROUNDING RECEPTACLE WITH BOX, PLATE & BRANCH CIRCUIT, 250/120 VOLTS, NEMA 14-20R FOR 20A BRANCH CIRCUIT, NEMA 14-30R FOR 30A BRANCH CIRCUIT UNLESS INDICATED OTHERWISE, FLUSH MOUNT C.L. UP TO 18" A.F.F. OR AS INDICATED.
	GROUNDING RECEPTACLE WITH BOX, PLATE & BRANCH CIRCUIT, 250/120 VOLTS, NEMA 14-50R UNLESS INDICATED OTHERWISE, FLUSH MOUNT C.L. UP TO 18" A.F.F. OR AS INDICATED.
	FINAL EQUIPMENT CONNECTION WITH OUTLET BOX, PLATE & BRANCH CIRCUIT, EQUIPMENT AS INDICATED, 120 VOLTS, VERIFY CONNECTION LOCATION WITH EQUIPMENT PROVIDER, CIRCUIT DESIGNATION.

EQUIPMENT ELECTRICAL SERVICES SYMBOLS LEGEND	
	EQUIPMENT POWER CONNECTION MARK, SEE EQUIPMENT ELEC. SERVICE SCHEDULE FOR BRANCH CIRCUIT & CONNECTION REQUIREMENTS, LOCATION SHOWN IS APPROXIMATE & REPRESENTATIVE.
	BRANCH CIRCUIT & POWER CONNECTION TO ELECTRIC MOTOR, PROVIDE & CONNECT THRU PROPER DISCONNECT SWITCH ADJACENT TO UNIT, LOCATION SHOWN IS APPROXIMATE, CIRCUIT DESIGNATION.
	BRANCH CIRCUIT & POWER CONNECTION TO EXHAUST FAN, INSTALL & CONNECT THRU CONTROL DEVICE & INTEGRAL DISCONNECT SWITCH, LOCATION SHOWN IS APPROXIMATE, CIRCUIT DESIGNATION.
	BRANCH CIRCUIT & POWER CONNECTION TO HEAT TAPE CONTROL DEVICE, GFI PROTECTED CIRCUIT, PROVIDE & CONNECT THRU 20A1P MMS ADJACENT TO UNIT FOR DISCONNECT SWITCH, LOCATION SHOWN IS APPROXIMATE, CIRCUIT DESIGNATION.
	VARIABLE FREQUENCY DRIVE, FURNISHED UNDER DIVISION 22/23, INSTALLED & CONNECTED BY DIVISION 26 CONTRACTOR, VERIFY LOCATION & CONNECTED EQUIPMENT PRIOR TO ROUGH-IN.
	ENERGY MANAGEMENT SYSTEM CONTROL PANEL, PROVIDED UNDER DIVISION 23, POWER CONNECTION BY DIVISION 26 CONTRACTOR, VERIFY LOCATION PRIOR TO ROUGH-IN.
	BRANCH CIRCUITS & DIRECT FINAL CONNECTIONS TO MODULAR AIR HANDLING UNIT LIGHTING, 120/277V, VERIFY CONNECTION LOCATION & REQUIREMENTS WITH EQUIPMENT PROVIDER PRIOR TO ROUGH-IN, CIRCUIT DESIGNATION.



CONSULTANTS:  
ELECTRICAL ENGINEER  
SCHULTZ & WYNNE, P.A.  
4523 OFFICE PARK DR.  
JACKSON, MS 39206  
T: (601) 982-3313

PROJECT:

HVAC UPGRADES  
LAUDERDALE COUNTY  
MERIDIAN, MISSISSIPPI

PROJECT NUMBER: 22.006  
DATE: 10/04/2022  
DRAWN BY: JMW  
CHECKED BY: JMW  
REV: 0  
1  
2  
3

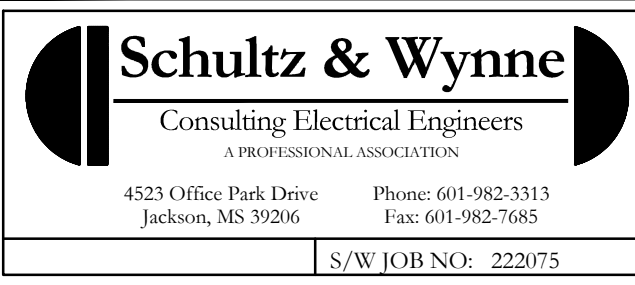
SEAL  
JOHN M. WYNNE  
REGISTERED PROFESSIONAL ENGINEER  
#11869  
STATE OF MISSISSIPPI  
10/04/2022

SHEET TITLE:

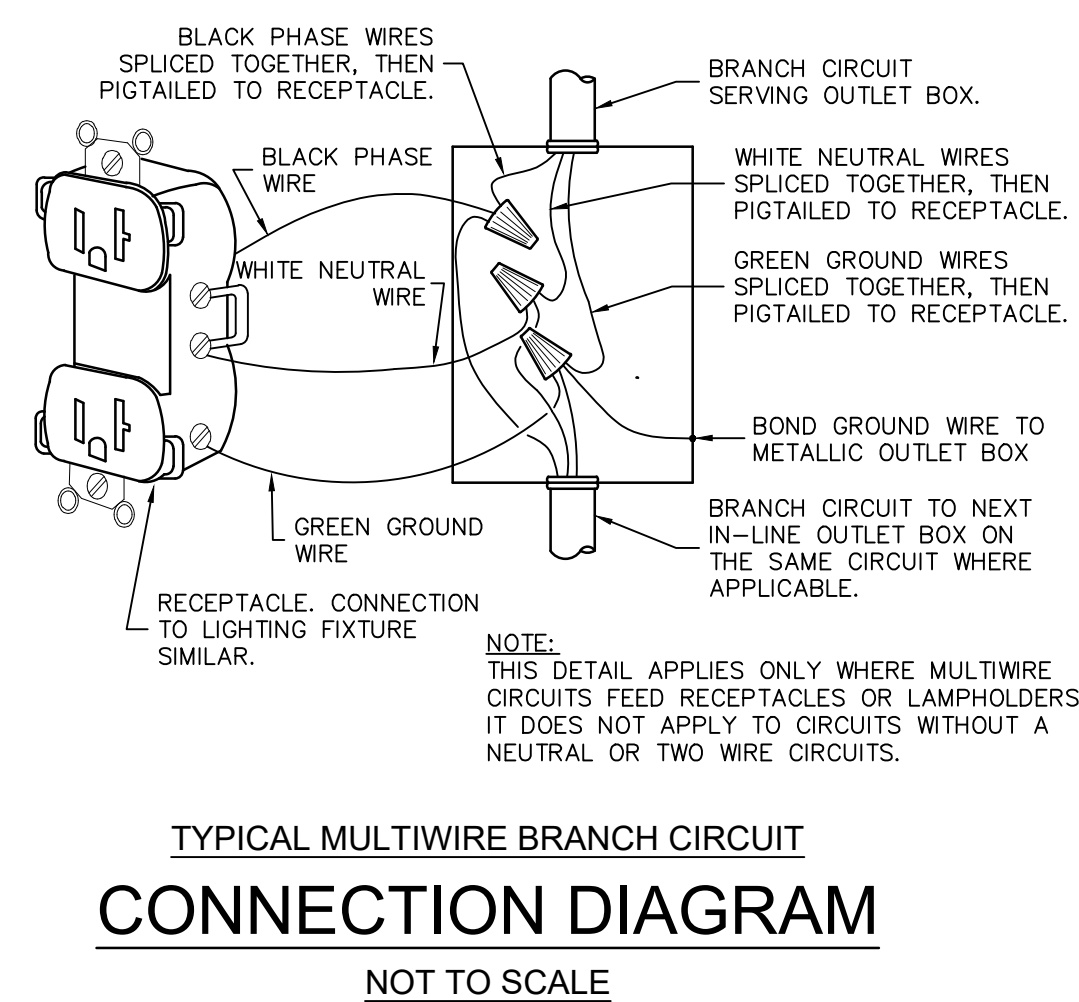
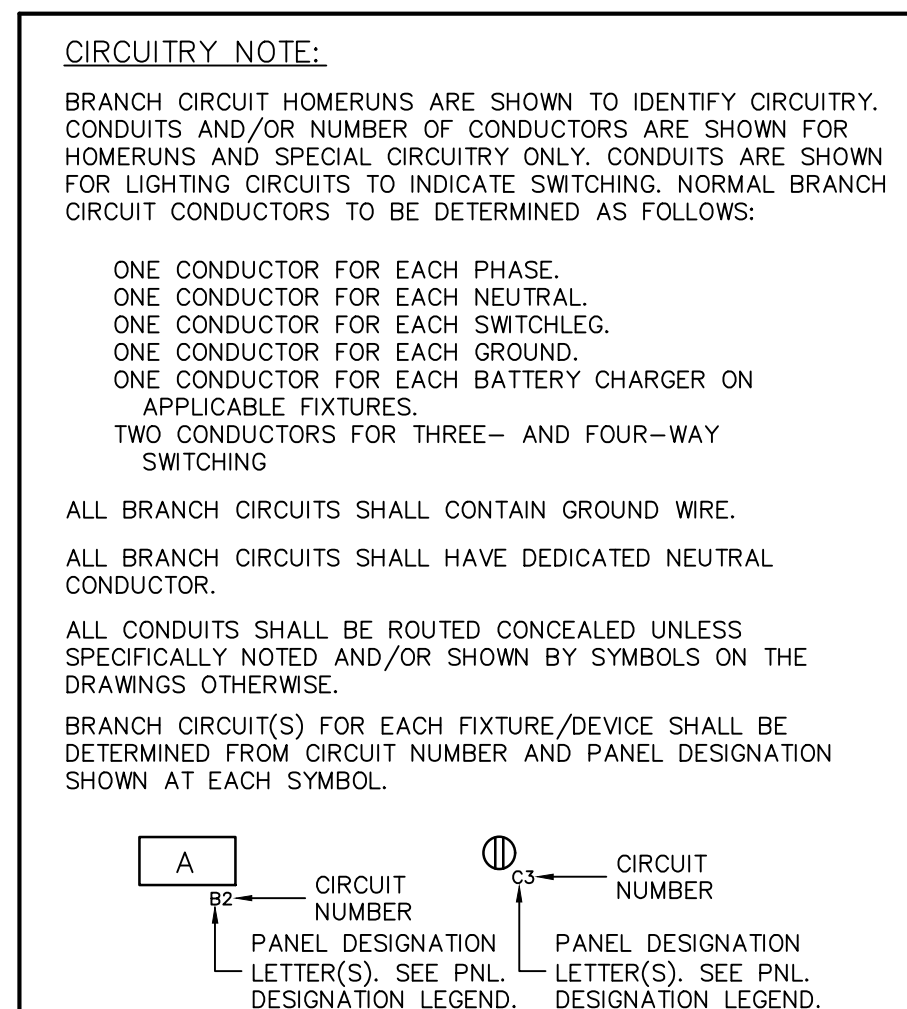
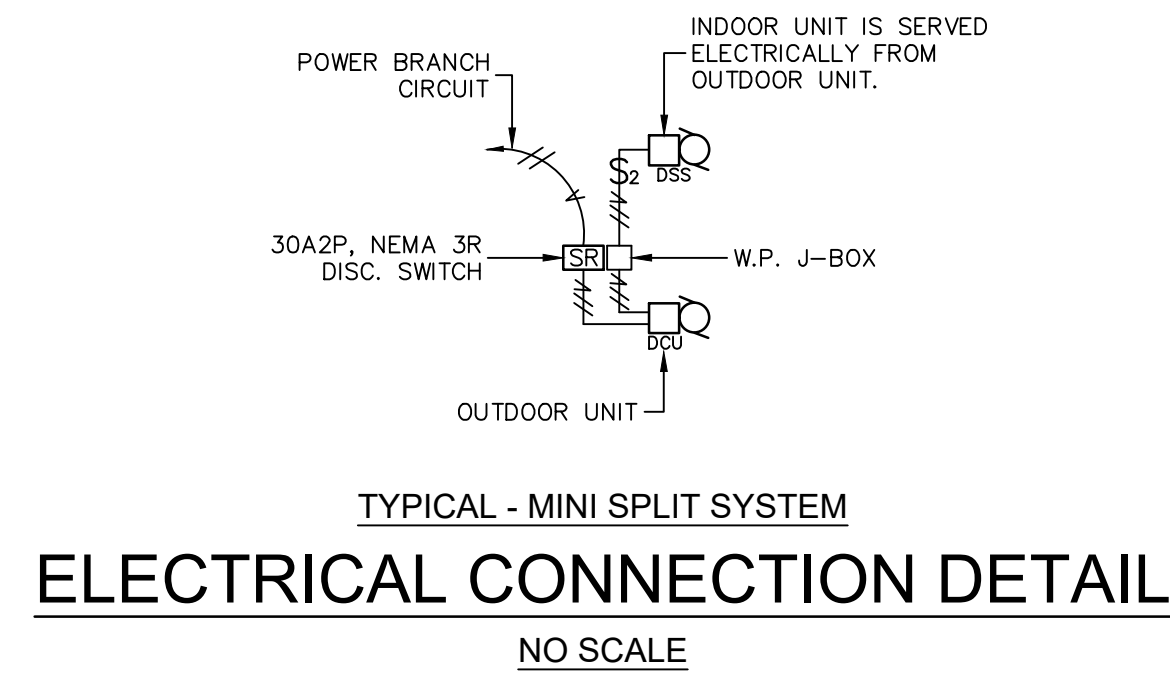
ELECTRICAL SYMBOLS LEGEND

SHEET NUMBER

E0.1



CONSTRUCTION DOCUMENTS



MARK NO.	EQUIPMENT DESCRIPTION	CIRCUIT (PNL. NO.)	BRANCH CIRCUIT		DISC. SW./ FUSE	NOTES
			CONDUCTORS	CONDUIT(S)		
<b>HUMAN SERVICE BLD</b>						
ODU-1	H.P. VRF COND. UNIT	MP1-1	(3)#8, (1)#10(G)	(1)-1"	60A3P	
	H.P. VRF COND. UNIT	MP1-3	(3)#8, (1)#10(G)	(1)-3/4"	60A3P	
BS-1-1	BRANCH CKT. CONTR	MP1-7	(2)#12, (1)#12(G)	(1)-3/4"	20A2P	
IU-1-A	I.D. VRF BLOWER UNIT	MP1-7	(2)#12, (1)#12(G)	(1)-3/4"	20A2P	
IU-1-B	I.D. VRF BLOWER UNIT	MP1-9	(2)#12, (1)#12(G)	(1)-3/4"	20A2P	
IU-1-C	I.D. VRF BLOWER UNIT	MP1-11	(2)#12, (1)#12(G)	(1)-3/4"	20A2P	
ODU-2	H.P. VRF COND. UNIT	MP1-2	(3)#8, (1)#10(G)	(1)-1"	60A3P	
	H.P. VRF COND. UNIT	MP1-4	(3)#8, (1)#10(G)	(1)-3/4"	60A3P	
BS-2-1	BRANCH CKT. CONTR	MP1-8	(2)#12, (1)#12(G)	(1)-3/4"	20A2P	
IU-2-A	I.D. VRF BLOWER UNIT	MP1-8	(2)#12, (1)#12(G)	(1)-3/4"	20A2P	
IU-2-B	I.D. VRF BLOWER UNIT	MP1-10	(2)#12, (1)#12(G)	(1)-3/4"	20A2P	
IU-2-C	I.D. VRF BLOWER UNIT	MP1-12	(2)#12, (1)#12(G)	(1)-3/4"	20A2P	
ODU-3	H.P. VRF COND. UNIT	MP2-1	(3)#8, (1)#10(G)	(1)-1"	60A3P	
	H.P. VRF COND. UNIT	MP2-3	(3)#8, (1)#10(G)	(1)-3/4"	60A3P	
BS-3-1	BRANCH CKT. CONTR	MP2-7	(2)#12, (1)#12(G)	(1)-3/4"	20A2P	
IU-3-A	I.D. VRF BLOWER UNIT	MP2-7	(2)#12, (1)#12(G)	(1)-3/4"	20A2P	
IU-3-B	I.D. VRF BLOWER UNIT	MP2-9	(2)#12, (1)#12(G)	(1)-3/4"	20A2P	
IU-3-C	I.D. VRF BLOWER UNIT	MP2-11	(2)#12, (1)#12(G)	(1)-3/4"	20A2P	
ODU-4	H.P. VRF COND. UNIT	MP2-2	(3)#8, (1)#10(G)	(1)-3/4"	60A3P	
	H.P. VRF COND. UNIT	MP2-4	(3)#8, (1)#10(G)	(1)-3/4"	60A3P	
BS-4-1	BRANCH CKT. CONTR	MP2-8	(2)#12, (1)#12(G)	(1)-3/4"	20A2P	
IU-4-A	I.D. VRF BLOWER UNIT	MP2-8	(2)#12, (1)#12(G)	(1)-3/4"	20A2P	
IU-4-B	I.D. VRF BLOWER UNIT	MP2-10	(2)#12, (1)#12(G)	(1)-3/4"	20A2P	
IU-4-C	I.D. VRF BLOWER UNIT	MP2-12	(2)#12, (1)#12(G)	(1)-3/4"	20A2P	
DOAS-1	DEDICATED OUTSIDE	MP1-5	(3)#8, (1)#8(G)	(1)-1 1/4"	W/EQUIP.	
EF-1	EXHAUST FAN	MP1-17	(1)#12, (1)#12(N), (1)#12(G)	(1)-3/4"	W/EQUIP.	
EF-2	EXHAUST FAN	MP1-17	(1)#12, (1)#12(N), (1)#12(G)	(1)-3/4"	W/EQUIP.	
EF-3	EXHAUST FAN	MP1-18	(1)#12, (1)#12(N), (1)#12(G)	(1)-3/4"	W/EQUIP.	
EF-4	EXHAUST FAN	MP1-18	(1)#12, (1)#12(N), (1)#12(G)	(1)-3/4"	W/EQUIP.	
EF-5	EXHAUST FAN	MP2-15	(1)#12, (1)#12(N), (1)#12(G)	(1)-3/4"	W/EQUIP.	
EF-6	EXHAUST FAN	MP2-15	(1)#12, (1)#12(N), (1)#12(G)	(1)-3/4"	W/EQUIP.	
EF-7	EXHAUST FAN	MP2-16	(1)#12, (1)#12(N), (1)#12(G)	(1)-3/4"	W/EQUIP.	
EF-8	EXHAUST FAN	MP2-16	(1)#12, (1)#12(N), (1)#12(G)	(1)-3/4"	W/EQUIP.	
<b>E-911 BUILDING</b>						
AHU-1	MODULAR AIR HANDL	EXG	(3)#2, (1)#8(G)	(1)-1 1/4"	100A3P/80A	NOTE 1
CU-2	H.P. CONDENSING UN	EXG	(2)#8, (1)#10(G)	(1)-3/4"	60A2P	NOTE 1
AHU-2	AIR HANDLING UNIT	EXG	(2)#2, (1)#8(G)	(1)-3/4"	100A2P	NOTE 1
CU-3	H.P. CONDENSING UN	EXG	(2)#8, (1)#10(G)	(1)-3/4"	30A2P	NOTE 1
AHU-3	AIR HANDLING UNIT	EXG	(1)#4, (1)#8(G)	(1)-3/4"	100A2P	NOTE 1
CRAC-1	COMPUTER RM. A/C U	EXG	(3)#2, (1)#8(G)	(1)-1 1/4"	200A3P/110A	NOTE 1
CRCU-1	COMPUTER RM. COND	EXG	(3)#10, (1)#10(G)	(1)-3/4"	30A3P	NOTE 1
T-1-A	VAV TERMINAL UNIT		(1)#12, (1)#12(N), (1)#12(G)	(1)-3/4"	20A1P	NOTE 2
T-1-B	VAV TERMINAL UNIT		(1)#12, (1)#12(N), (1)#12(G)	(1)-3/4"	20A1P	NOTE 2
T-2-A	VAV TERMINAL UNIT		(1)#12, (1)#12(N), (1)#12(G)	(1)-3/4"	20A1P	NOTE 2
T-2-B	VAV TERMINAL UNIT		(1)#12, (1)#12(N), (1)#12(G)	(1)-3/4"	20A1P	NOTE 2
T-2-C	VAV TERMINAL UNIT		(1)#12, (1)#12(N), (1)#12(G)	(1)-3/4"	20A1P	NOTE 2
MD-1	MOTORIZED DAMPER		(1)#12, (1)#12(N), (1)#12(G)	(1)-3/4"	20A1P	NOTE 2
<b>AGRI-CENTER BUILDING</b>						
CU-1	MINI-SPLIT SYS. COND	RBA-1	(2)#10, (1)#10(G)	(1)-3/4"	30A2P	
DSS-1	INDOOR BLOWER UNIT	CU-1	(2)#12, (1)#12(G)	(1)-3/4"	20A2P	
CU-2	MINI-SPLIT SYS. COND	RBA-2	(2)#10, (1)#10(G)	(1)-3/4"	30A2P	
DSS-2	INDOOR BLOWER UNIT	CU-2	(2)#12, (1)#12(G)	(1)-3/4"	20A2P	
CU-3	MINI-SPLIT SYS. COND	RBA-3	(2)#10, (1)#10(G)	(1)-3/4"	30A2P	
DSS-3	INDOOR BLOWER UNIT	CU-3	(2)#12, (1)#12(G)	(1)-3/4"	20A2P	
CU-4	MINI-SPLIT SYS. COND	RBA-4	(2)#10, (1)#10(G)	(1)-3/4"	30A2P	
DSS-4	INDOOR BLOWER UNIT	CU-4	(2)#12, (1)#12(G)	(1)-3/4"	20A2P	
CU-5	MINI-SPLIT SYS. COND	RBA-5	(2)#10, (1)#10(G)	(1)-3/4"	30A2P	
DSS-5	INDOOR BLOWER UNIT	CU-5	(2)#12, (1)#12(G)	(1)-3/4"	20A2P	
CU-6	MINI-SPLIT SYS. COND	LA-29	(2)#8, (1)#10(G)	(1)-3/4"	60A2P	NOTE 2
DSS-6	INDOOR BLOWER UNIT	CU-6	(2)#12, (1)#12(G)	(1)-3/4"	20A2P	
CU-7	MINI-SPLIT SYS. COND	LA-30	(2)#8, (1)#10(G)	(1)-3/4"	60A2P	NOTE 2
DSS-7	INDOOR BLOWER UNIT	CU-7	(2)#12, (1)#12(G)	(1)-3/4"	20A2P	
DH-1	DEHUMIDIFIER	LA-31	(1)#12, (1)#12(N), (1)#12(G)	(1)-3/4"	20A1P	NOTE 2
DH-2	DEHUMIDIFIER	LA-32	(1)#12, (1)#12(N), (1)#12(G)	(1)-3/4"	20A1P	NOTE 2
DH-3	DEHUMIDIFIER	RBA-7	(1)#12, (1)#12(N), (1)#12(G)	(1)-3/4"	20A1P	
DH-4	DEHUMIDIFIER	RBA-9	(1)#12, (1)#12(N), (1)#12(G)	(1)-3/4"	20A1P	
DH-5	DEHUMIDIFIER	RBA-11	(1)#12, (1)#12(N), (1)#12(G)	(1)-3/4"	20A1P	
EF-1	EXHAUST FAN	LA-33	(1)#12, (1)#12(N), (1)#12(G)	(1)-3/4"	20A1P	NOTE 2
EF-2	EXHAUST FAN	RBA-8	(1)#12, (1)#12(N), (1)#12(G)	(1)-3/4"	20A1P	
EF-3	EXHAUST FAN	RBA-10	(1)#12, (1)#12(N), (1)#12(G)	(1)-3/4"	20A1P	
EF-4	EXHAUST FAN	RBA-12	(1)#12, (1)#12(N), (1)#12(G)	(1)-3/4"	20A1P	
EF-5	EXHAUST FAN	RBA-12	(1)#12, (1)#12(N), (1)#12(G)	(1)-3/4"	20A1P	
EF-6	EXHAUST FAN	RBA-12	(1)#12, (1)#12(N), (1)#12(G)	(1)-3/4"	20A1P	
MD-1	MOTORIZED DAMPER	LA-31	(1)#12, (1)#12(N), (1)#12(G)	(1)-3/4"	20A1P	NOTE 2
MD-2	MOTORIZED DAMPER	LA-32	(1)#12, (1)#12(N), (1)#12(G)	(1)-3/4"	20A1P	NOTE 2

**EQUIPMENT ELECTRICAL SERVICE SCHEDULE NOTES:**

- PROVIDE & CONNECT NEW BRANCH CIRCUIT AS INDICATED IN EX'G ELECTRICAL PANELBOARD FOR REPLACEMENT EQUIPMENT. REPLACE SERVING C/B IN EX'G PANELBOARD WITH NEW C/B SIZED PER INDICATE MOCF.
- PROVIDE & CONNECT NEW BRANCH CIRCUIT AS INDICATED IN EX'G ELECTRICAL PANELBOARD.



**CONSULTANTS:**  
ELECTRICAL ENGINEER  
SCHULTZ & WYNNE, P.A.  
4523 OFFICE PARK DR.  
JACKSON, MS 39206  
T: (601) 982-3313

**PROJECT:**

**HVAC UPGRADES  
LAUDERDALE COUNTY  
MERIDIAN, MISSISSIPPI**

PROJECT NUMBER: 22.006  
DATE: 10/04/2022  
DRAWN BY: JMW  
CHECKED BY: JMW  
REV: 0  
1  
2  
3

SEAL  
  
10/04/2022

SHEET TITLE:

ELECTRICAL  
SCHEDULES & DETAILS

SHEET NUMBER

**E0.2**



**CONSTRUCTION DOCUMENTS**





**ENGINEERING  
RESOURCE GROUP**  
350 EDGEWOOD TERRACE DRIVE  
JACKSON, MS 39206  
PHONE: (601) 362-3552  
FAX: (601) 366-6418

**CONSULTANTS:**  
ELECTRICAL ENGINEER  
SCHULTZ & WYNNE, P.A.  
4523 OFFICE PARK DR.  
JACKSON, MS 39206  
T: (601) 982-3313

PROJECT:

**HVAC UPGRADES  
LAUDERDALE COUNTY  
MERIDIAN, MISSISSIPPI**

PROJECT NUMBER: 22.006  
DATE: 10/04/2022  
DRAWN BY: JMW  
CHECKED BY: JMW  
REV: 0  
1  
2  
3

SEAL  
  
10/04/2022

SHEET TITLE:  
HUMAN SERVICES BLDG. ELECTRICAL 1ST FLOOR PLAN

SHEET NUMBER  
**E1.1**



**1**  
E1.1  
LAUDERDALE COUNTY HUMAN SERVICES BLDG.  
ELECTRICAL 1ST FLOOR PLAN - NEW WORK  
SCALE: 1/8" = 1'-0"

**Schultz & Wynne**  
Consulting Electrical Engineers  
A PROFESSIONAL ASSOCIATION  
4523 Office Park Drive Phone: 601-982-3313  
Jackson, MS 39206 Fax: 601-982-7685  
S/W JOB NO: 222075



**ENGINEERING  
RESOURCE GROUP**  
350 EDGEWOOD TERRACE DRIVE  
JACKSON, MS 39206  
PHONE: (601) 362-3552  
FAX: (601) 366-6418

**CONSULTANTS:**  
ELECTRICAL ENGINEER  
SCHULTZ & WYNNE, P.A.  
4523 OFFICE PARK DR.  
JACKSON, MS 39206  
T: (601) 982-3313

PROJECT:

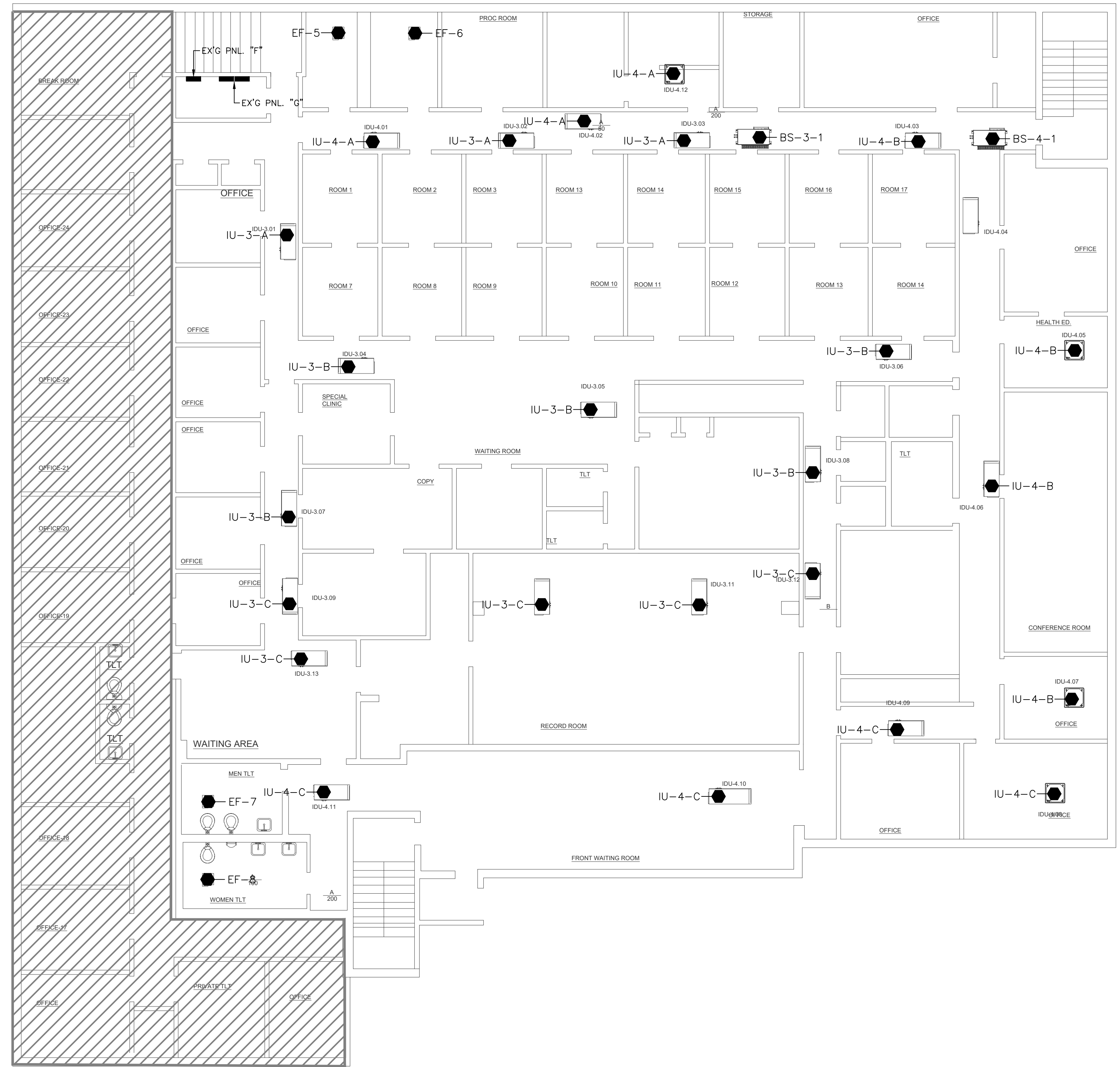
**HVAC UPGRADES  
LAUDERDALE COUNTY  
MERIDIAN, MISSISSIPPI**

PROJECT NUMBER: 22.006  
DATE: 10/04/2022  
DRAWN BY: JMW  
CHECKED BY: JMW  
REV: 0  
1  
2  
3

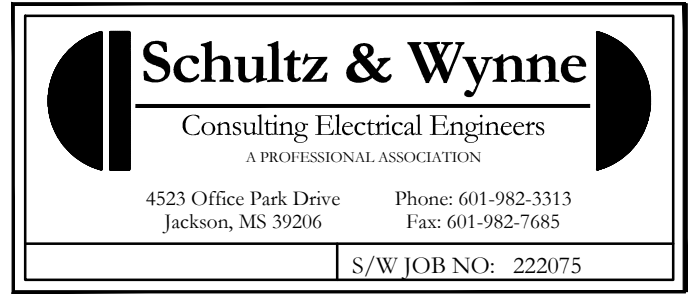
SEAL  
  
 10/04/2022

SHEET TITLE:  
HUMAN SERVICES BLDG. ELECTRICAL 2ND FLOOR PLAN

SHEET NUMBER  
**E1.2**



1  
E1.2 LAUDERDALE COUNTY HUMAN SERVICES BLDG.  
ELECTRICAL 2ND FLOOR PLAN - NEW WORK  
SCALE: 1/8" = 1'-0"



CONSTRUCTION DOCUMENTS

CONSULTANTS:  
ELECTRICAL ENGINEER  
SCHULTZ & WYNNE, P.A.  
4523 OFFICE PARK DR.  
JACKSON, MS 39206  
T: (601) 982-3313

PROJECT:

HVAC UPGRADES  
LAUDERDALE COUNTY  
MERIDIAN, MISSISSIPPI

PROJECT NUMBER: 22.006  
DATE: 10/04/2022  
DRAWN BY: JMW  
CHECKED BY: JMW  
REV: 0  
1  
2  
3

SEAL  
JOHN M. WYNNE  
REGISTERED PROFESSIONAL ENGINEER  
#11869  
STATE OF MISSISSIPPI  
10/04/2022

SHEET TITLE:  
HUMAN SERVICES BLDG. ELECTRICAL SCHEDULES & DETAILS

SHEET NUMBER

E1.3

PANEL "MP1"																
VOLTS: 208Y/120		PHASE: 3		MOUNTING: SURFACE		K.A.I.C: 35										
MAIN: 400A		WIRE: 4		K.A.I.C: 35		MAIN BREAKER: NONE										
NEUTRAL: 100%		FED FROM: EXG ELEC. SERVICE SWITCHBOARD		MAIN BREAKER: NONE												
CKT. NO.	LOAD DESCRIPTION	KVA	PH. A	PH. B	PH. C	AMPS	POLES	BREAKER	PH	POLES	AMPS	PH. A	PH. B	PH. C	LOAD DESCRIPTION	CKT. NO.
1	H.P. VRF COND. UNIT ODU-1 (CIRCUIT #1)	4.40				70	3	A	3	70	4.40				H.P. VRF COND. UNIT ODU-2 (CIRCUIT #1)	2
3	H.P. VRF COND. UNIT ODU-1 (CIRCUIT #2)	3.38				50	3	A	3	50	3.38				H.P. VRF COND. UNIT ODU-2 (CIRCUIT #2)	4
5	DEDICATED OUTSIDE AIR UNIT DOAS-1	8.61				110	3	A	3	70					SPARE	6
7	VRF BLOWER UNITS BS-1-1; IU-1-A	1.00				15	2	A	2	15	1.00				VRF BLOWER UNITS BS-2-1; IU-2-A	8
9	VRF BLOWER UNITS IU-1-B	1.00				15	2	C	2	15	1.00				VRF BLOWER UNITS IU-2-B	10
11	VRF BLOWER UNITS IU-1-C	1.00				15	2	B	2	15	1.00				VRF BLOWER UNITS IU-2-C	12
13	SPARE					15	2	A	2	15					SPARE	14
15	O.D. RECEPTACLE	1.00				20	1	C	1	20	1.00				EMS CONTROL PANEL	16
17	EXH. FANS EF-1, EF-2	0.50				20	1	A	1	20	0.50				EXH. FANS EF-3, EF-4	18
19	SPARE					20	1	B	1	20					SPARE	20
21	SPARE					20	1	C	1	20					SPARE	22

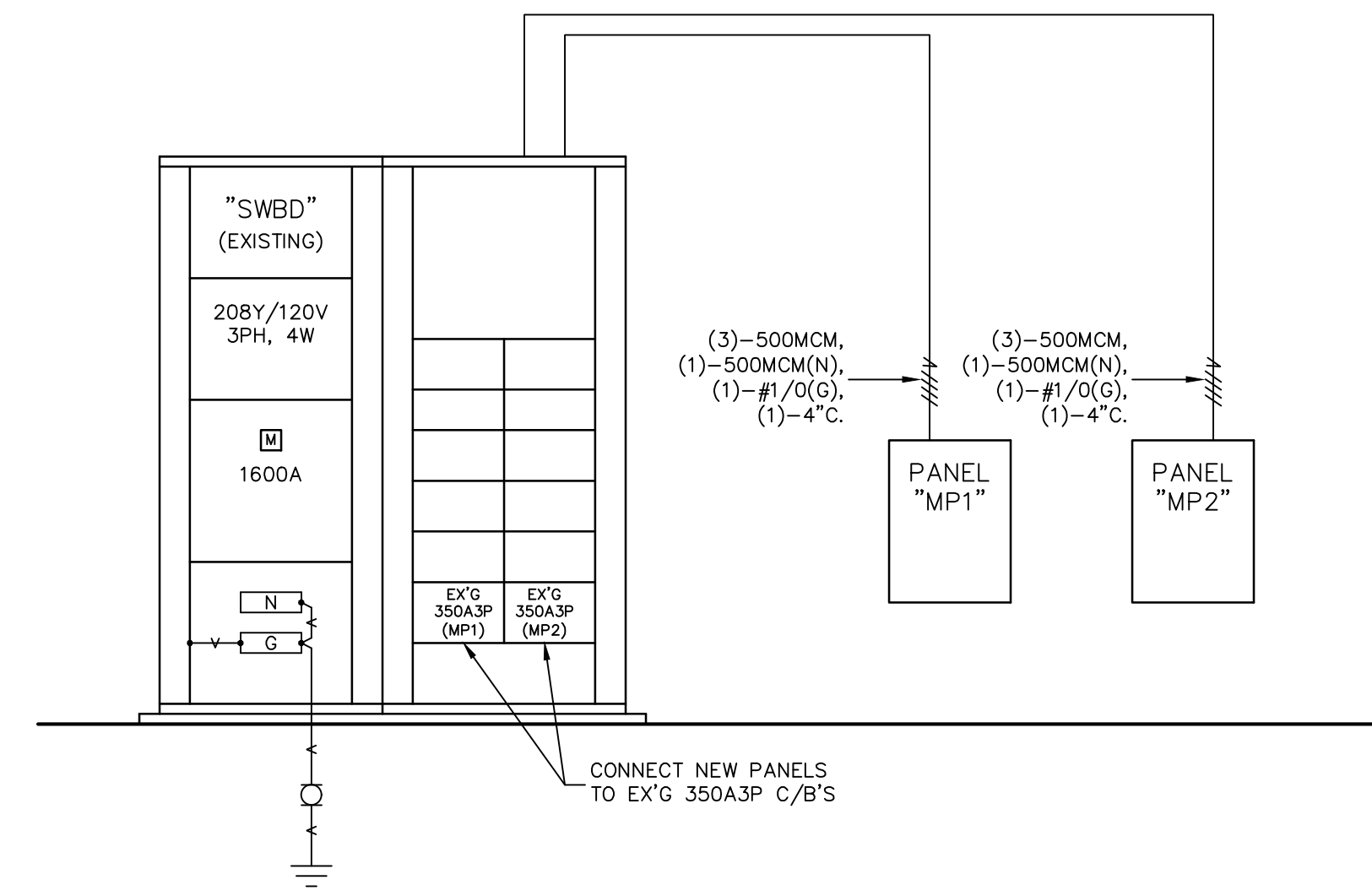
  

PANEL "MP1"			
TOTAL CONNECTED LOAD - KVA:		TOTAL DEMAND - KVA:	86.5
PHASE A:	28.2	TOTAL DEMAND - AMPS:	240.4
PHASE B:	28.2	SPARE CAPACITY - %:	15%
PHASE C:	30.2	TOTAL LOAD - KVA:	86.5
TOTAL CONNECTED LOAD:	87.5	TOTAL LOAD - AMPS:	276.5

PANEL "MP2"																
VOLTS: 208Y/120		PHASE: 3		MOUNTING: SURFACE		K.A.I.C: 35										
MAIN: 400A		WIRE: 4		K.A.I.C: 35		MAIN BREAKER: NONE										
NEUTRAL: 100%		FED FROM: EXG ELEC. SERVICE SWITCHBOARD		MAIN BREAKER: NONE												
CKT. NO.	LOAD DESCRIPTION	KVA	PH. A	PH. B	PH. C	AMPS	POLES	BREAKER	PH	POLES	AMPS	PH. A	PH. B	PH. C	LOAD DESCRIPTION	CKT. NO.
1	H.P. VRF COND. UNIT ODU-3 (CIRCUIT #1)	4.40				70	3	A	3	50	3.38				H.P. VRF COND. UNIT ODU-4 (CIRCUIT #1)	2
3	H.P. VRF COND. UNIT ODU-3 (CIRCUIT #2)	4.40				70	3	A	3	50	3.38				H.P. VRF COND. UNIT ODU-4 (CIRCUIT #2)	4
5	SPARE					70	3	A	3	50					SPARE	6
7	VRF BLOWER UNITS BS-3-1; IU-3-A	1.00				15	2	A	2	15	1.00				VRF BLOWER UNITS BS-4-1; IU-4-A	8
9	VRF BLOWER UNITS IU-3-B	1.00				15	2	C	2	15	1.00				VRF BLOWER UNITS IU-4-B	10
11	VRF BLOWER UNITS IU-3-C	1.00				15	2	B	2	15	1.00				VRF BLOWER UNITS IU-4-C	12
13	SPARE					15	2	A	2	15					SPARE	14
15	EXH. FANS EF-5, EF-6	0.50				20	1	C	1	20	0.50				EXH. FANS EF-7, EF-8	16
17	SPARE					20	1	A	1	20					SPARE	18
19	SPARE					20	1	B	1	20					SPARE	20
21	SPARE					20	1	C	1	20					SPARE	22

PANEL "MP2"			
TOTAL CONNECTED LOAD - KVA:		TOTAL DEMAND - KVA:	59.7
PHASE A:	19.6	TOTAL DEMAND - AMPS:	165.9
PHASE B:	19.6	SPARE CAPACITY - %:	25%
PHASE C:	20.6	TOTAL LOAD - KVA:	74.6
TOTAL CONNECTED LOAD:	59.7	TOTAL LOAD - AMPS:	207.3



1  
E3.1  
NO SCALE

HUMAN SERVICES BUILDING  
ELECTRICAL DISTRIBUTION SYSTEM  
SCHEMATIC POWER RISER DIAGRAM – NEW WORK

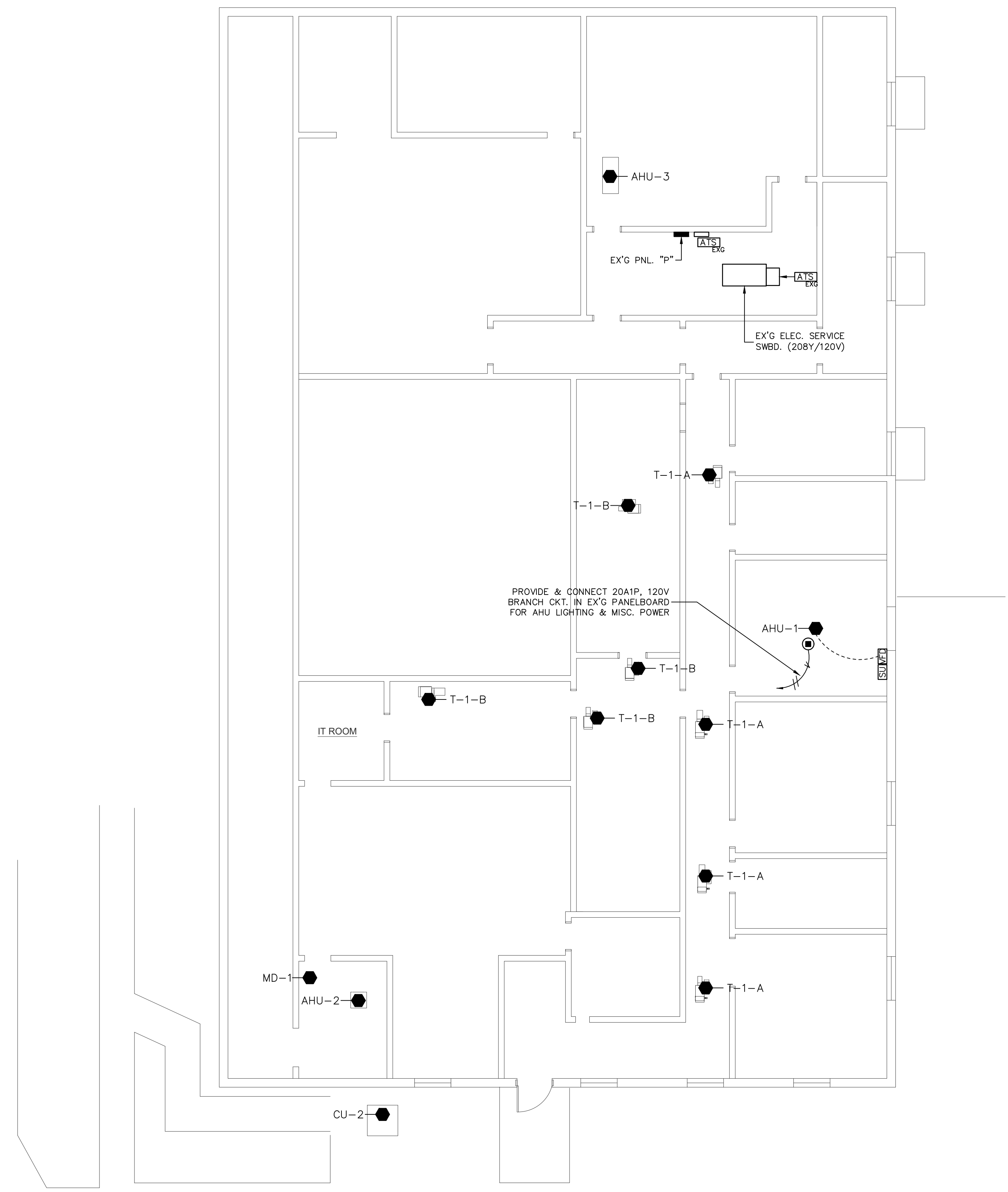


**ENGINEERING  
RESOURCE GROUP**  
350 EDGEWOOD TERRACE DRIVE  
JACKSON, MS 39206  
PHONE: (601) 362-3552  
FAX: (601) 366-6418

**CONSULTANTS:**  
ELECTRICAL ENGINEER  
SCHULTZ & WYNNE, P.A.  
4523 OFFICE PARK DR.  
JACKSON, MS 39206  
T: (601) 982-3313

PROJECT:

**HVAC UPGRADES  
LAUDERDALE COUNTY  
MERIDIAN, MISSISSIPPI**



**1**  
**E2.1** LAUDERDALE COUNTY EMERGENCY SERVICES BLDG.  
ELECTRICAL 1ST FLOOR PLAN – NEW WORK  
SCALE: 1/8" = 1'-0"

PROJECT NUMBER:	22.006
DATE:	10/04/2022
DRAWN BY:	JMW
CHECKED BY:	JMW
REV: 0	
1	
2	
3	

SEAL  
  
10/04/2022

SHEET TITLE:  
**EMERGENCY  
SERVICES BLDG.  
ELECTRICAL  
1ST FLOOR PLAN**

SHEET NUMBER  
**E2.1**

**Schultz & Wynne**  
Consulting Electrical Engineers  
A PROFESSIONAL ASSOCIATION  
4523 Office Park Drive Phone: 601-982-3313  
Jackson, MS 39206 Fax: 601-982-7685  
S/W JOB NO: 222075



**ENGINEERING  
RESOURCE GROUP**  
350 EDGEWOOD TERRACE DRIVE  
JACKSON, MS 39206  
PHONE: (601) 362-3552  
FAX: (601) 366-6418

**CONSULTANTS:**  
ELECTRICAL ENGINEER  
SCHULTZ & WYNNE, P.A.  
4523 OFFICE PARK DR.  
JACKSON, MS 39206  
T: (601) 982-3313

PROJECT:

**HVAC UPGRADES  
LAUDERDALE COUNTY  
MERIDIAN, MISSISSIPPI**

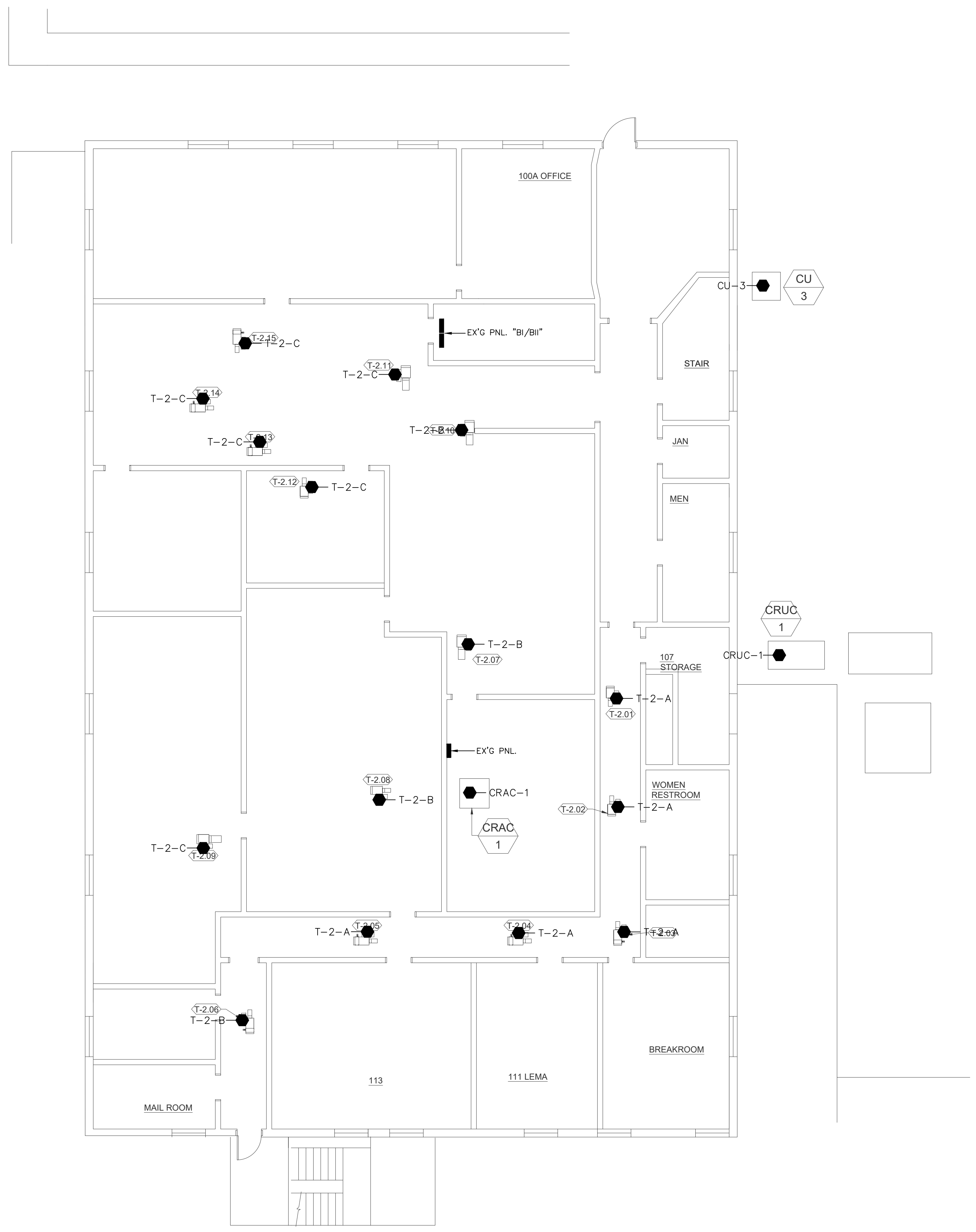
PROJECT NUMBER: 22.006  
DATE: 10/04/2022  
DRAWN BY: JMW  
CHECKED BY: JMW  
REV: 0  
1  
2  
3

SEAL  
  
10/04/2022

SHEET TITLE:  
EMERGENCY SERVICES BLDG.  
ELECTRICAL  
2ND FLOOR PLAN

SHEET NUMBER

**E2.2**



1  
E2.2  
LAUDERDALE COUNTY EMERGENCY SERVICES BLDG.  
ELECTRICAL 2ND FLOOR PLAN - NEW WORK  
SCALE: 1/8" = 1'-0"  
NORTH

**Schultz & Wynne**  
Consulting Electrical Engineers  
A PROFESSIONAL ASSOCIATION  
4523 Office Park Drive Phone: 601-982-3313  
Jackson, MS 39206 Fax: 601-982-7685  
S/W JOB NO: 222075

CONSTRUCTION DOCUMENTS



**ENGINEERING  
RESOURCE GROUP**  
350 EDGEWOOD TERRACE DRIVE  
JACKSON, MS 39206  
PHONE: (601) 362-3552  
FAX: (601) 366-6418

**CONSULTANTS:**  
ELECTRICAL ENGINEER  
SCHULTZ & WYNNE, P.A.  
4523 OFFICE PARK DR.  
JACKSON, MS 39206  
T: (601) 982-3313

PROJECT:

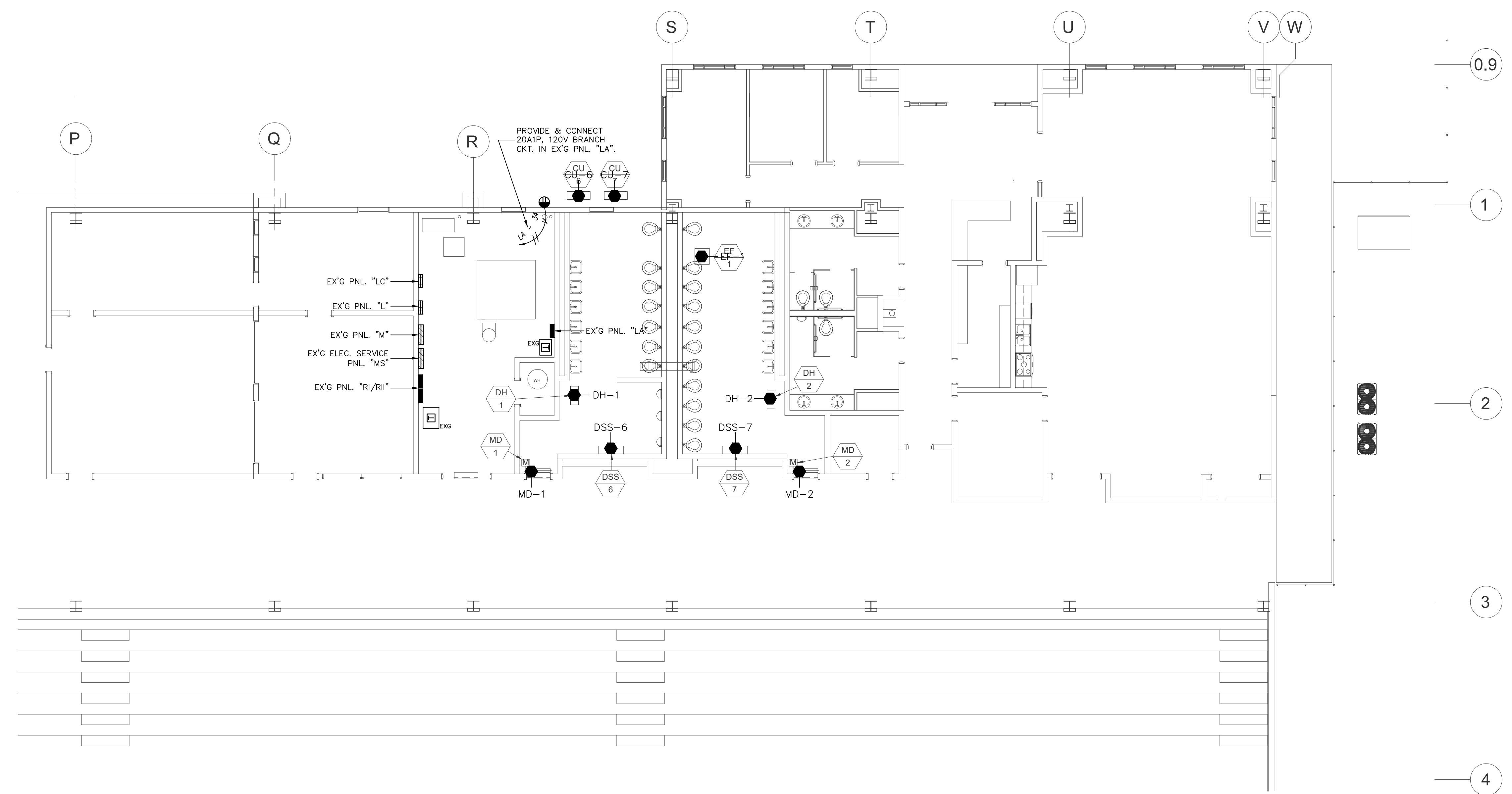
**HVAC UPGRADES  
LAUDERDALE COUNTY  
MERIDIAN, MISSISSIPPI**

PROJECT NUMBER: 22.006  
DATE: 10/04/2022  
DRAWN BY: JMW  
CHECKED BY: JMW  
REV: 0  
1  
2  
3

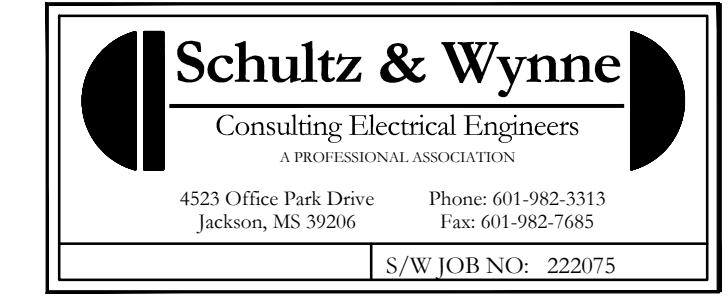
SEAL  
  
10/04/2022

SHEET TITLE:  
AGRI-CENTER BLDG.  
ELECTRICAL  
UPPER LEVEL PLAN

SHEET NUMBER  
**E3.1**



**1**  
**E3.1** LAUDERDALE COUNTY AGRI-CENTER BLDG.  
ELECTRICAL UPPER LEVEL PLAN - NEW WORK  
SCALE: 1/8" = 1'-0"



CONSTRUCTION DOCUMENTS

CONSULTANTS:  
ELECTRICAL ENGINEER  
SCHULTZ & WYNNE, P.A.  
4523 OFFICE PARK DR.  
JACKSON, MS 39206  
T: (601) 982-3313

PROJECT:

HVAC UPGRADES  
LAUDERDALE COUNTY  
MERIDIAN, MISSISSIPPI

PROJECT NUMBER: 22.006  
DATE: 10/04/2022  
DRAWN BY: JMW  
CHECKED BY: JMW  
REV: 0  
1  
2  
3

SEAL  
JOHN M. WYNNE  
REGISTERED PROFESSIONAL ENGINEER  
#11869  
STATE OF MISSISSIPPI  
10/04/2022

SHEET TITLE:  
AGRI-CENTER BLDG.  
ELECTRICAL  
LOWER LEVEL PLAN

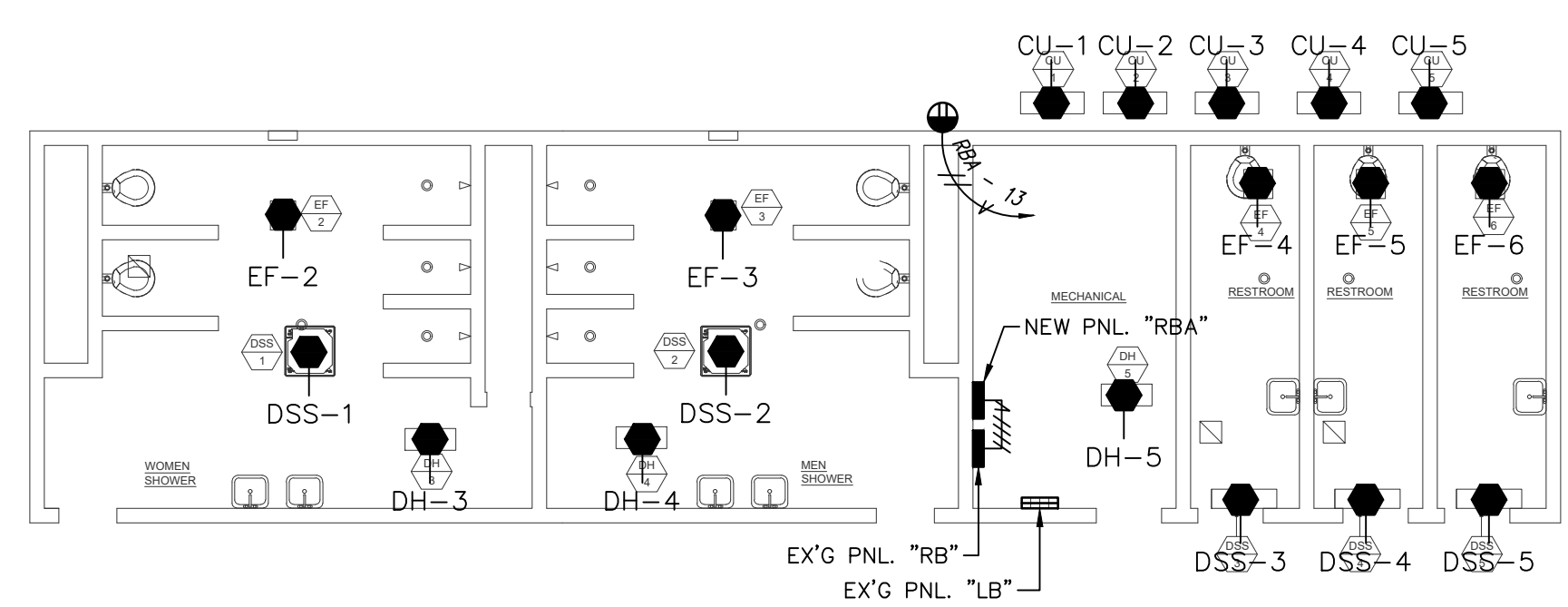
SHEET NUMBER

E3.2

PANEL "RBA"														
VOLTS: 208Y/120				PHASE: 3				MOUNTING: SURFACE						
MAIN: 125A				WIRE: 4				K.A.I.C.: 10						
NEUTRAL: 100%				FED FROM: EXG PANEL "RB"				MAIN BREAKER: NONE						
CKT. NO.	LOAD DESCRIPTION	KVA			BREAKER			BREAKER			KVA			CKT. NO.
		PH. A	PH. B	PH. C	AMPS	POLES	PH	POLES	AMPS	PH. A	PH. B	PH. C	LOAD DESCRIPTION	
1	MINI-SPLIT SYSTEM	0.83			20	2	A	2	20	0.83			MINI-SPLIT SYSTEM	2
	CU-1/DSS-1		0.83				B				0.83		CU-2/DSS-2	
3	MINI-SPLIT SYSTEM			0.83	15	2	C	2	15			0.83	MINI-SPLIT SYSTEM	4
	CU-3/DSS-3	0.83					A			0.83			CU-4/DSS-4	
5	MINI-SPLIT SYSTEM			0.83	15	2	B	2	20				SPARE	6
	CU-5/DSS-5			0.83			C							
7	DEHUMIDIFIER DH-3	0.60			20	1	A	1	20	0.50			EXH. FAN EF-2	8
9	DEHUMIDIFIER DH-4		0.60		20	1	B	1	20		0.50		EXH. FAN EF-3	10
11	DEHUMIDIFIER DH-5			0.60	20	1	C	1	20			0.50	EXH. FANS EF-4,-5,-6	12
13	O.D. RECEPT.	1.00			20	1	A	1					SPACE	14
15	SPARE				20	1	B	1					SPACE	16
17	SPARE				20	1	C	1					SPACE	18
19	SPACE						A						SPACE	20
21	SPACE						B						SPACE	22
23	SPACE						C						SPACE	24

REMARKS: PROVIDE & CONNECT 60A3P C/B IN EXISTING PANEL "RB" TO SERVE NEW PANEL "RBA".  
PANEL "RBA" FEEDER CIRCUIT SHALL BE (3)#6, (1)#6(N), (1)#10(G), 1"C.

PANEL "RBA"			
TOTAL CONNECTED LOAD - KVA:		TOTAL DEMAND - KVA:	12.1
PHASE A:	5.4	TOTAL DEMAND - AMPS:	33.6
PHASE B:	3.6	SPARE CAPACITY - %:	25%
PHASE C:	3.6	TOTAL LOAD - KVA:	15.1
TOTAL CONNECTED LOAD:	12.6	TOTAL LOAD - AMPS:	42.0



1  
E3.2  
LAUDERDALE COUNTY AGRI-CENTER BLDG.  
ELECTRICAL LOWER LEVEL PLAN - NEW WORK  
SCALE: 1/8" = 1'-0"

**Schultz & Wynne**  
Consulting Electrical Engineers  
A PROFESSIONAL ASSOCIATION  
4523 Office Park Drive Phone: 601-982-3313  
Jackson, MS 39206 Fax: 601-982-7685  
S/W JOB NO: 222075

CONSTRUCTION DOCUMENTS



## PRE-BID CONFERENCE MINUTES

DATE	TIME
JANUARY 19, 2023	10:00 AM

### PROJECT INFORMATION

PROJECT NAME & NUMBER	HVAC Upgrades – Lauderdale County
PROJECT LOCATION	Meridian, MS
ERG PN	22.006

### PROFESSIONAL

ENGINEERING RESOURCE GROUP, INC.			
NAME	TITLE	PHONE	EMAIL
Chad Moore	Project Engineer	(601) 362-3552 (O) (601) 940-9704 (M)	<a href="mailto:cmoore@ergms.com">cmoore@ergms.com</a>

### OWNER

Lauderdale County, MS			
NAME	TITLE	PHONE	EMAIL
Chris Lafferty	County Administrator	(601) 482-9751	<a href="mailto:clafferty@lauderdalecounty.org">clafferty@lauderdalecounty.org</a>
Reza Bazyari	Facilities Director	(601) 479-4137	<a href="mailto:rbazyari@lauderdalecounty.org">rbazyari@lauderdalecounty.org</a>

### KEY BIDDING DATES

DESCRIPTION	DATE – TIME
PRE-BID CONFERENCE	1/19/2023 – 10:00 am
ALL QUESTIONS TO ERG	2/2/2023 at 5:00 pm
LAST ADDENDUM	2/3/2023 at 5:00 pm
BID DATE	2/8/2023 at 2:00 pm

PROJECT DURATION:	365 Consecutive Calendar Days
LIQUIDATED DAMAGES	\$250.00 per calendar day





- A. Reviewed Section 002113 – Instructions to Bidders.
  - 1. Encouraged bidders to review this section.
  - 2. Submit bids in sealed opaque envelope.
  - 3. Include all required information with bid. Documents shall include but not limited to the following:
    - a. Bid Security.
    - b. Power of Attorney.
  
- B. Reviewed Section 004113 – Bid Proposal Form.
  - 1. Complete all blanks. If blank is Not Applicable include N/A.
  - 2. Time of Completion: 365 consecutive calendar days.
  - 3. Liquidated Damages: \$250 for each calendar day.
  - 4. Acknowledge all addenda. It is the contractor's responsibility to confirm all addenda.
  
- C. Base Bid:
  - 1. Human Services Building: HVAC system replacement.
  
- D. Add Alternate No. 1: (**Changed via Addendum 1**)
  - 1. Emergency Services (E-911) Building: HVAC system replacement.
  
- E. Add Alternate No. 2: (**Changed via Addendum 1**)
  - 2. Agri-Center: New HVAC systems.
  
- F. Human Services:
  - 1. Work performed on 1 floor at a time. Initial floor shall be completed prior to moving to the second floor.
  - 2. Complete HVAC system replacement.
  - 3. Ceiling demolition.
  - 4. New HVAC and control systems.

5. Testing, Adjusting, and Balancing of HVAC systems.
6. Replace ceilings (salvage lights and all other ceiling mounted devices).
7. Patching, painting, repairing; building to be restored to condition prior to work beginning.
8. Electrical system demolition and service to new equipment.

G. Emergency Services:

1. Careful coordination with Owner is required while performing work in this building.
2. Complete HVAC system replacement.
3. Ceiling demolition.
4. New HVAC and control systems.
5. Testing, Adjusting, and Balancing of HVAC systems.
6. Replace ceilings (salvage lights and all other ceiling mounted devices).
7. Patching, painting, repairing; building to be restored to condition prior to work beginning.
8. Electrical system demolition and service to new equipment.

H. Agri-Center:

1. Work performed around events at the facility.
2. New HVAC systems in the restrooms.
3. Ceiling demolition.
4. Testing, Adjusting, and Balancing of HVAC systems.
5. Replace ceilings (salvage lights and all other ceiling mounted devices).
6. Patching, painting, repairing; building to be restored to condition prior to work beginning.
7. Electrical system demolition and service to new equipment.

ERG urged bidders to review plans and project manual carefully. Contact ERG with questions or concerns.

Attendees were encouraged to walk the project site to familiarize themselves with the existing site conditions and contact ERG with any questions, comments, or concerns.

Pre-bid conference adjourned at 11:00 am.



This is the majority of the items discussed at the pre-bid conference as noted by ERG. Anyone wishing to suggest additions or modifications to these minutes is to do so in writing to ERG within three (3) calendar days of their receipt of these minutes.

Thanks and respectfully submitted,

A handwritten signature in blue ink, appearing to read 'Chad E. Moore'.

Chad E. Moore, P.E.  
Principal

Email Copy: All Attendees